

SQ610/SQ610B
QUANTUM THERMOSTAT
INSTALLATION MANUAL



Introduction

The SQ610 Quantum is a ZigBee temperature controller for wireless control of iT600 series devices, such as the KL08RF wiring centre, mini TRV head, RX10RF boiler control module. In order to control SQ610 over the Internet or via the SALUS Premium Lite app (ONLINE mode), it must be installed together with the UGE600/UG600 or UG800 Internet gateway (sold separately). From the application level, it is possible to pair SQ610 with other system elements, e.g. Smart Plug SPE600, Smart Relay SR600 or window/door sensor SW600. SQ610 can be used locally without an Internet connection (OFFLINE mode), however, its communication with other devices must be done using the CO10RF coordinator (sold separately). SQ610 Quantum can work without UGE600/UG800 Universal Gateway or CO10RF Coordinator as a standalone device.

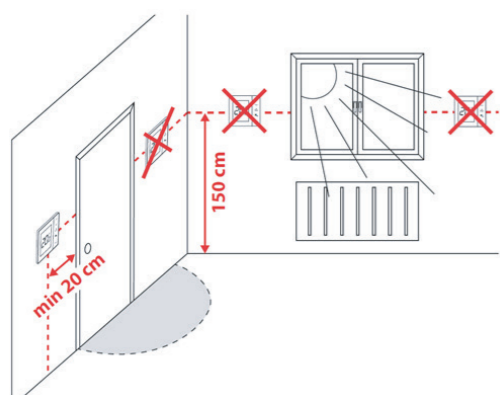
Product Compliance

This product complies with the essential requirements and other relevant provisions of Directives GPSR 2023/988/EU, RED 2025/138/EU and RoHS 2017/2102/EU. The full text of the EU Declaration of Conformity is available at the following internet address: www.saluslegal.com.

Safety Information

Use in accordance with the regulations. Indoor use only. Keep your device completely dry. Installation must be carried out by a qualified person in accordance to national and EU regulations.

Mounting the thermostat

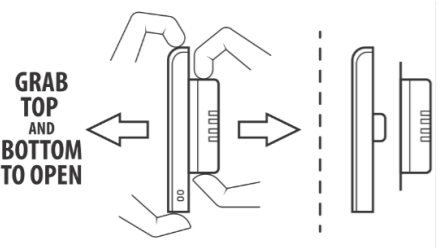


Please note

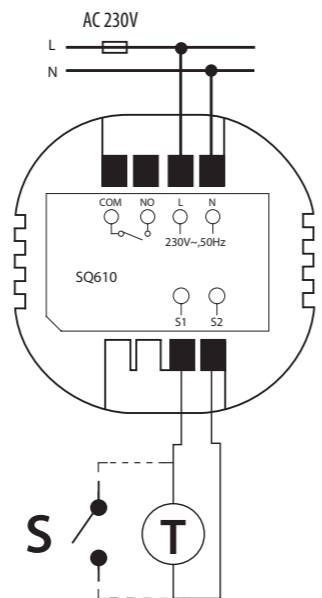
The ideal position to mount the thermostat is about 1,5m above floor level, far from heating or cooling sources. Make sure that the thermostat is not exposed to sunlight or any extreme conditions like, for example, draft.

Because of fire and explosion risk, do not use the thermostat in atmosphere of explosive gases and flammable liquids (eg coal dust). If there are any listed dangers, you have to use additional protection measures - anti-dust and explosive gases (tight cover) or prevent their formation. Furthermore, the thermostat can't be used in condensation of water vapor conditions or directly exposed to water.

Wall mounting



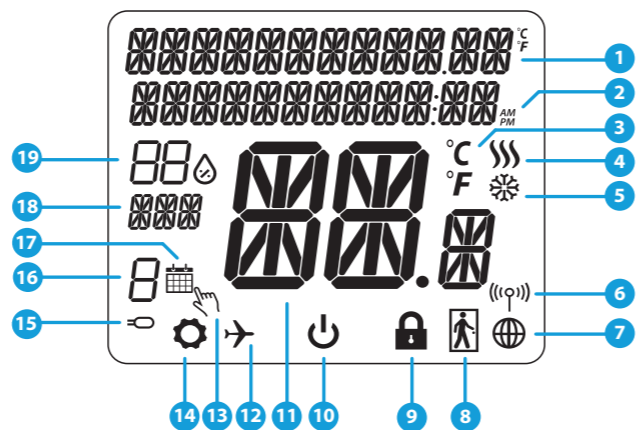
Wiring diagram



Symbols explanation:
S-volt-free contact
T-temperature sensor
L, N-230V AC power supply
COM, NO - Voltage free output

S1,S2 terminals:
- air or floor temperature sensor
- external volt-free contact to connect any ON/OFF switch or occupancy sensor (hotel card)

LCD Icon Description



- 1. Menu/Settings description + Clock
- 2. AM/PM
- 3. Temperature unit
- 4. Heating indicator (icon is animating when there is heating demand)
- 5. Cooling indicator (icon is animating when there is cooling demand)
- 6. RF Connection indicator
- 7. Internet connection indicator
- 8. Occupancy sensor (hotel card)
- 9. Key lock function
- 10. Standby mode icon
- 11. Current Temperature / Setpoint Temperature
- 12. Holiday mode
- 13. Temporary override mode
- 14. Settings icon
- 15. External / Floor temp sensor indicator
- 16. Schedule program number
- 17. Schedule mode icon
- 18. Day indicator/ SET information
- 19. Humidity Display

Button description

Button	Function
[Menu]	1) Menu button / Return button. 2) In the MAIN SCREEN: Press and hold for 3 sec to change the thermostat operating mode (Schedule mode / Permanent mode). 3) In the SETTINGS SCREEN: Press and hold for 3 sec to go back without saving the changes. 4) In the PAIRING SCREEN (in SYSTEM TYPE Menu): Press and hold for 3 sec to see other pairing options.
[Down]	„Down” Button (Decrease parameter value/moving on the menu in ‘DOWN’ direction)
[Up]	„Up” Button (Increase parameter value/moving on the menu in ‘UP’ direction)
[OK/Tick]	1) “OK / Tick” Button (Confirm parameter value / Go to the next menu / Save settings) 2) In the MAIN SCREEN: Press and hold for 3 seconds to enter Standby mode 3) In the SETTINGS SCREEN: Press and hold for 3 sec to go back to the MAIN SCREEN & SAVE all the changes.
[Lock]	In the MAIN SCREEN - press and hold these buttons together for 3 seconds to LOCK / UNLOCK the thermostat keys).

First power up sequence, language choice and pairing

1 GRAB TOP AND BOTTOM TO OPEN

2 ...display will show all icons...

3 SOFTWARE VERSION 0.5
...then the thermostat will display the software version.

To power on the thermostat, you have to connect it to the 230V power supply, then...

4 LANGUAGE ENGLISH

5 CONNECT WITH THE NETWORK YES

Now, choose your language by pressing the \downarrow or \uparrow buttons. Confirm by pressing the \checkmark button.

YES - ONLINE, OFFLINE MODE.
You can configure your thermostat with universal gateway or CO10RF coordinator. That is, add it to the Salus Smart Home system.

NO-STANDALONE.
The thermostat works as a standalone device for pump, boiler, receivers, etc. That is, you can directly connect the thermostat to the selected device without any network system. You can add it later at any time.

General information about the Salus Premium Lite application

Thanks to the UGE600/UG600 or UG800 Universal Gateway and the SALUS Premium Lite app, the system allows you to remote control of your heating system in any place you are in the moment by smartphone, tablet or computer with Internet connection. Then you have also access to advanced functions of SQ610 Quantum thermostat. You can also create OneTouch rules to customize system to your needs.

- Install the Salus Premium Lite app.
- Power on the UG800 or UGE600/UG600 gateway and connect it to the router.
- Power up the gateway until all LEDs become solid green on UG800 or solid blue on UGE600/UG600. Press the main button for 3 seconds to open the ZigBee network.

3 UG800 UGE600/UG600 CO10RF

Installation in online mode - Pairing with the KL08RF

1 CONNECT WITH THE NETWORK YES

2 CONNECT WITH THE NETWORK

3 Go to the SALUS Premium Lite app.

Select “YES”, by pressing the \uparrow or \downarrow buttons. Confirm by pressing \checkmark .

Now, the thermostat is looking for signal from the gateway...

Go to the SALUS Premium Lite app.

4 Open main menu.

5 Select “Settings”.

6 Now select “Setup Equipment”.

7 Scan for equipment

Press “Scan for Equipment”.

8 Let's connect your equipment

The app has started scanning...

9 UGE600/UG600 will start flashing red. UG800 ZigBee LED will show solid orange.

10 GO TO SMART HOME APP

Thermostat is now connected and will show the two icons on the bottom right corner of the screen. Go to the Salus Premium Lite app to configure it.

11 Let's connect your equipment

Select your thermostat and press on “Connect equipment”.

12 Success!

Name your thermostat and select “Next”.

13 Press on the gear icon.

14 Thermostat

Now, choose “UFH Wiring Centre or Control Box” option.

15 Setup for your “SQ610 230V Thermostat”

Select your KL08RF/Control Box added before.

Manufacturer:
SALUS Controls plc
Units 8-10, Northfield Business Park, Forge Way, Parkgate Rotherham, S60 1SD, United Kingdom

Importer:
Salus Controls European Distribution sp.z o.o.
ul. Szamocka 8, piętro 6., 01 748 Warszawa, Poland

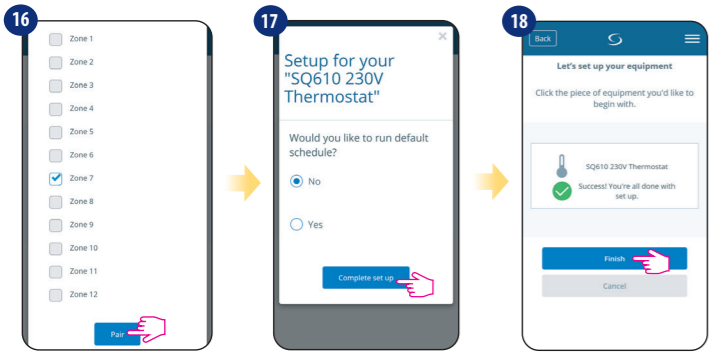
UK: tech@salus-tech.com
PL: poland@saluscontrols.com
RO: tehnic@saluscontrols.ro
DK: Support@salus-controls.dk
DE / NL: info@salus-controls.de
FR: technicalsupport@saluscontrols.fr



www.saluscontrols.com

SALUS Controls is a member of the Computime Group. Maintaining a policy of continuous product development SALUS Controls plc reserve the right to change specification, design and materials of products listed in this brochure without prior notice.

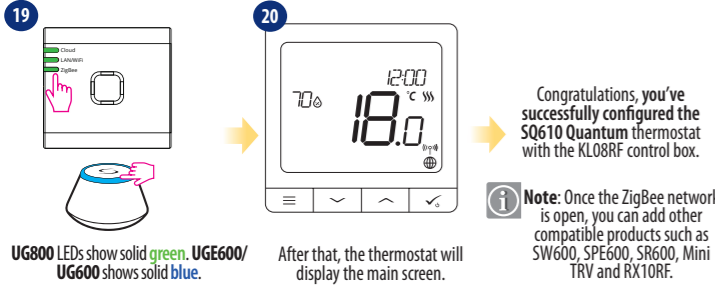




16 Select the zone which you want to allocate your thermostat. You can pair one thermostat with more than one zone.

17 Choose "No" if you want to set your own schedule later or "Yes" if default now.

18 You've finished the pairing process with the KL08RF control box in the app.

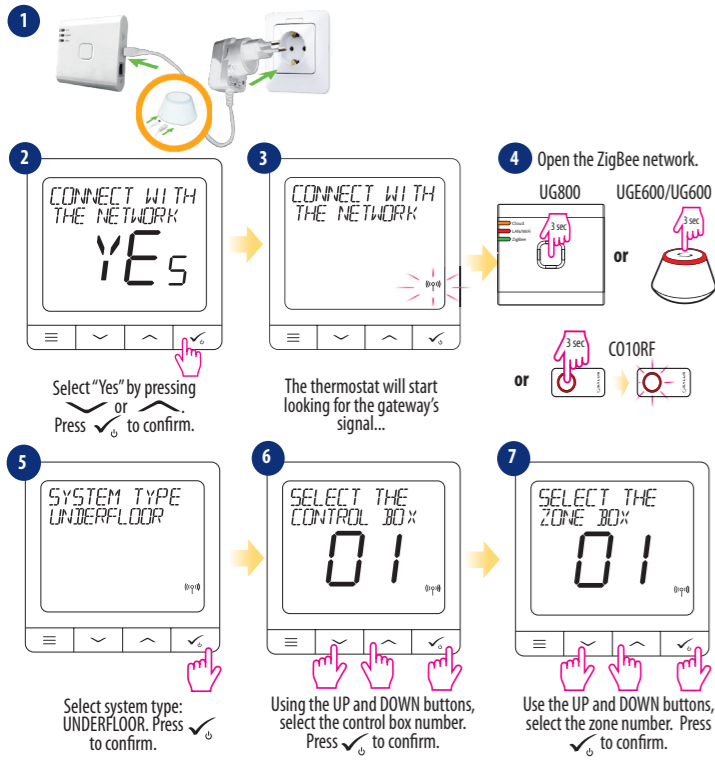


19 UG800 LEDs show solid green. UGE600/UG600 shows solid blue.

20 After that, the thermostat will display the main screen.

Note: Once the ZigBee network is open, you can add other compatible products such as SW600, SPE600, SR600, Mini TRV and RX10RF.

Installation in offline mode - Pairing with the KL08RF



1 Select "Yes" by pressing or Press ✓ to confirm.

2 The thermostat will start looking for the gateway's signal...

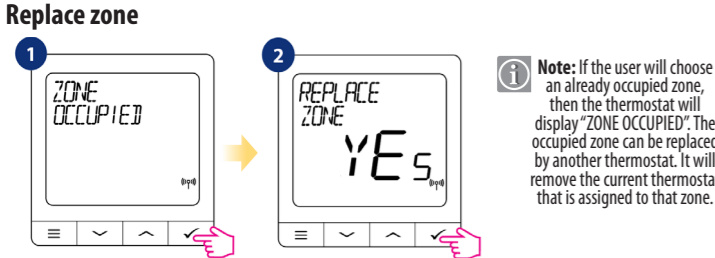
3 Open the ZigBee network.

4 UG800 or UGE600/UG600 or CO10RF

5 Select system type: UNDERFLOOR. Press ✓ to confirm.

6 Using the UP and DOWN buttons, select the control box number. Press ✓ to confirm.

7 Use the UP and DOWN buttons, select the zone number. Press ✓ to confirm.



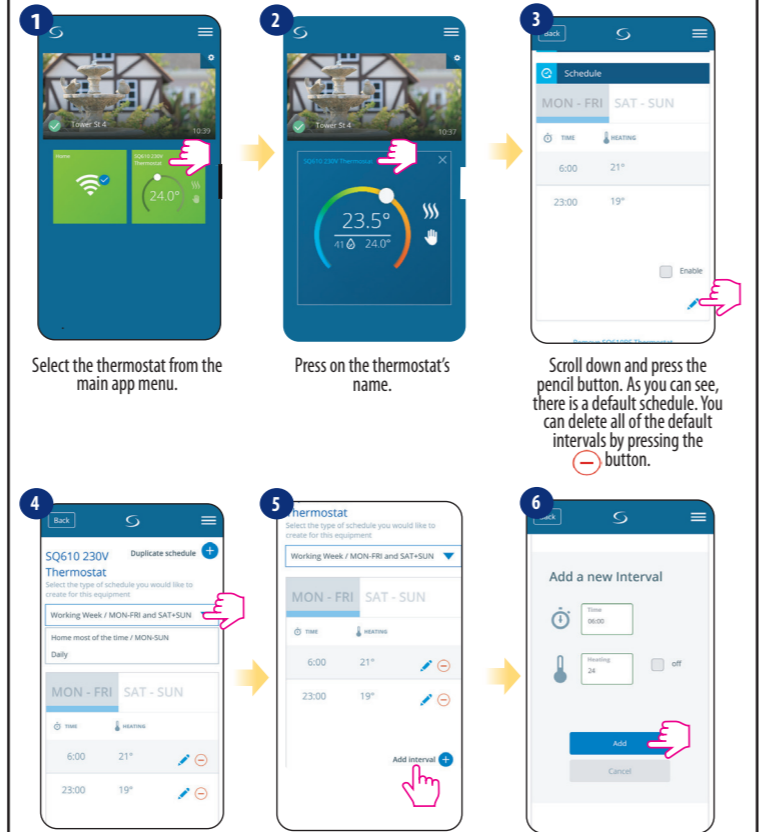
8 You can pair your thermostat with more than one zone. Select additional zones or finish the pairing process by pressing ✓.

9 When the thermostat is successfully paired, main screen will be displayed.

10 Close the ZigBee network.

Note: If the user will choose an already occupied zone, then the thermostat will display "ZONE OCCUPIED". The occupied zone can be replaced by another thermostat. It will remove the current thermostat that is assigned to that zone.

Setting the schedule: in the app (online mode)



1 Select the thermostat from the main app menu.

2 Press on the thermostat's name.

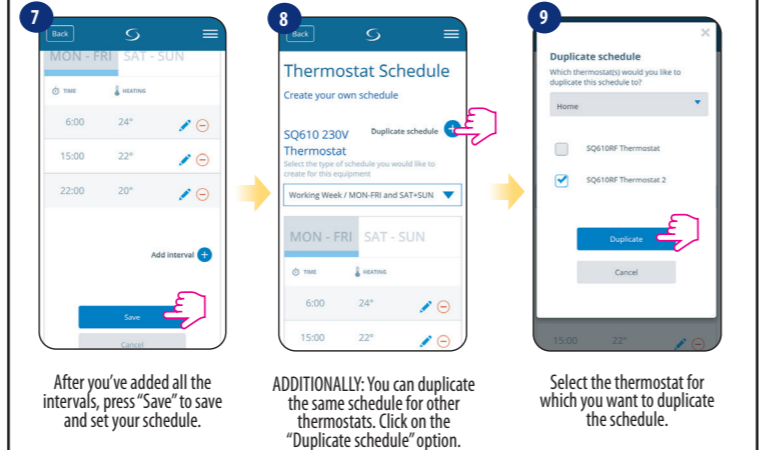
3 Scroll down and press the pencil button. As you can see, there is a default schedule. You can delete all of the default intervals by pressing the - button.

4 Choose which days you want the program to schedule:
 * 5+2 (5 days same program + 2 days same program - MON-FRI + SAT-SUN)
 * Individual, every week (daily)
 * All 7 days same program (MON-SUN)

5 After you select the period, use the "Add interval" option to add your intervals to the schedule.

6 Then, add the start time and temperature setpoint. Confirm by pressing the "Add" button.

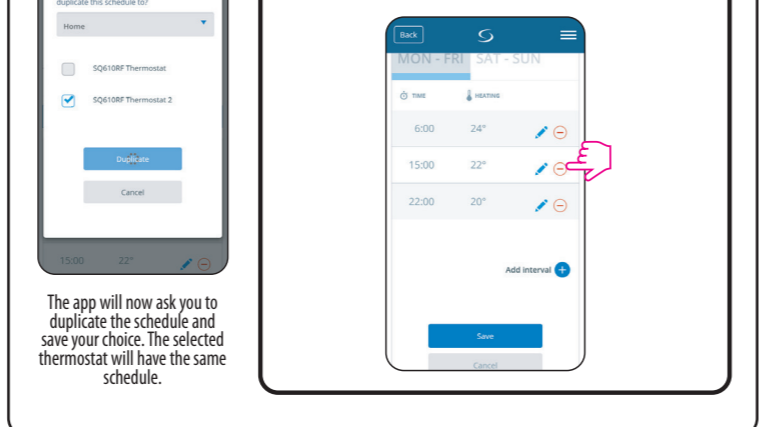
Note: You can add as many intervals as you wish by repeating the procedure described from steps 3 to 6. The procedure is the same for all 3 schedule configurations. You can also customise the programs on the thermostat in any way you want.



7 After you've added all the intervals, press "Save" to save and set your schedule.

8 ADDITIONALLY: You can duplicate the same schedule for other thermostats. Click on the "Duplicate schedule" option.

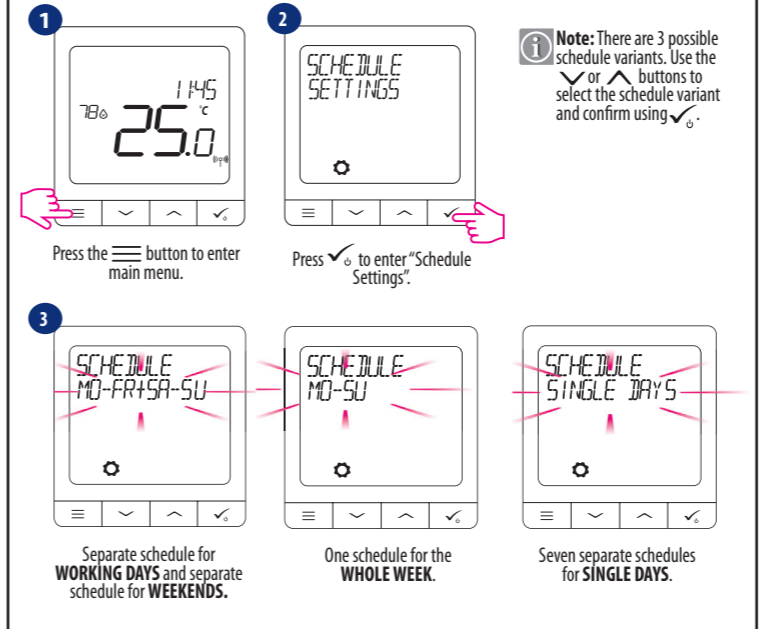
9 Select the thermostat for which you want to duplicate the schedule.



10 The app will now ask you to duplicate the schedule and save your choice. The selected thermostat will have the same schedule.

Note: To delete any interval in the schedule, just use the - button next to the selected interval.

Setting the schedule: using the thermostat (offline mode)

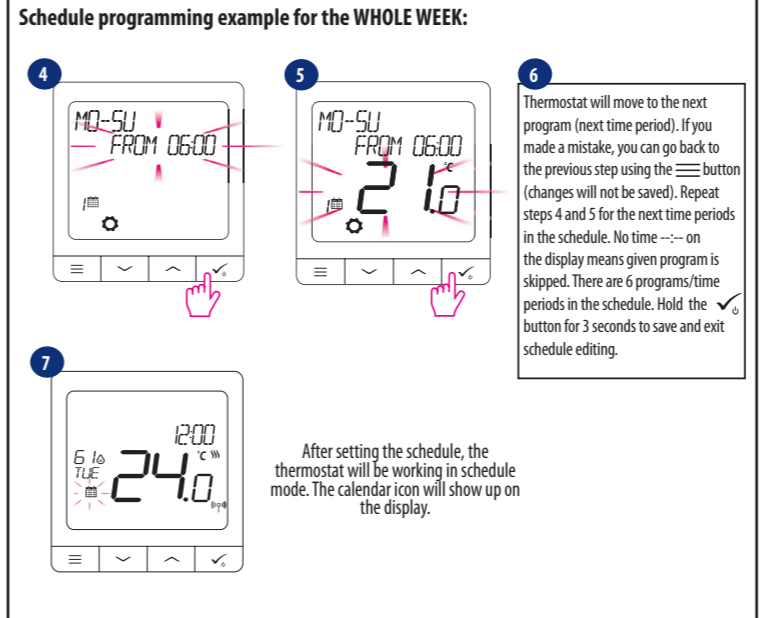


1 Press the ≡ button to enter main menu.

2 Press ✓ to enter "Schedule Settings".

3 Separate schedule for WORKING DAYS and separate schedule for WEEKENDS. One schedule for the WHOLE WEEK. Seven separate schedules for SINGLE DAYS.

Note: There are 3 possible schedule variants. Use the ✓ or ✗ buttons to select the schedule variant and confirm using ✓.

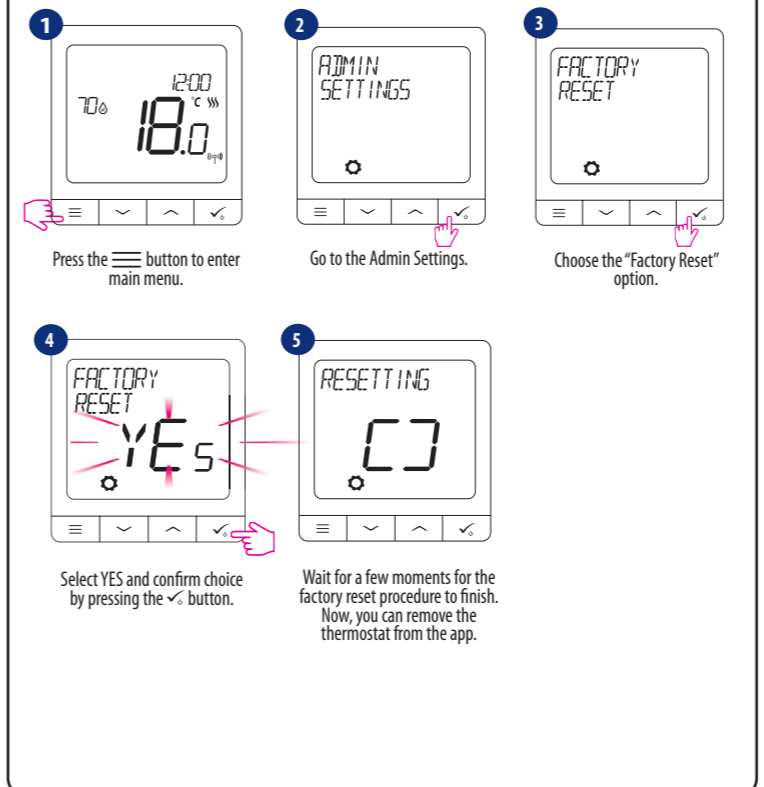


4 Schedule programming example for the WHOLE WEEK:

5 Thermostat will move to the next program (next time period). If you made a mistake, you can go back to the previous step using the ≡ button (changes will not be saved). Repeat steps 4 and 5 for the next time periods in the schedule. No time --- on the display means given program is skipped. There are 6 programs/time periods in the schedule. Hold the ✓ button for 3 seconds to save and exit schedule editing.

6 After setting the schedule, the thermostat will be working in schedule mode. The calendar icon will show up on the display.

Factory reset



1 Press the ≡ button to enter main menu.

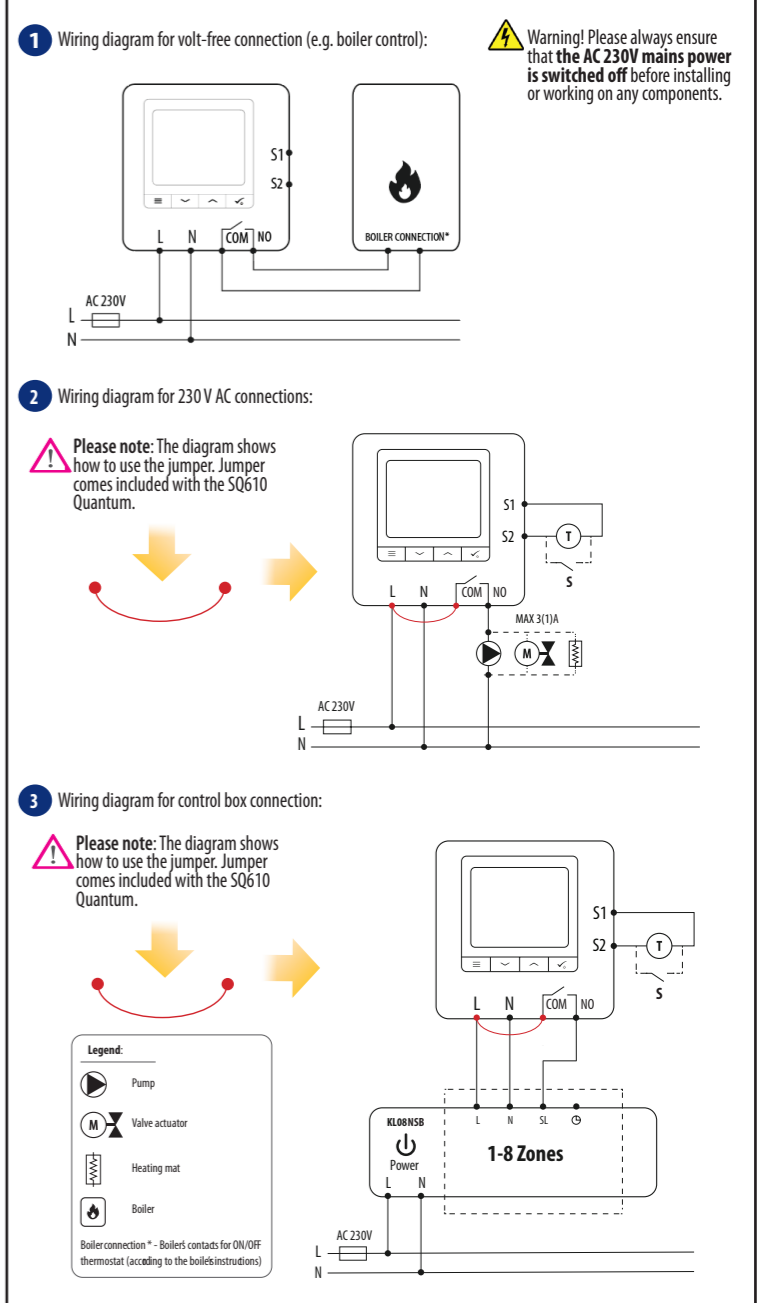
2 Go to the Admin Settings.

3 Choose the "Factory Reset" option.

4 Select YES and confirm choice by pressing the ✓ button.

5 Wait for a few moments for the factory reset procedure to finish. Now, you can remove the thermostat from the app.

Wiring diagrams for SQ610 Quantum as a wired device



1 Wiring diagram for volt-free connection (e.g. boiler control):

Warning! Please always ensure that the AC 230V mains power is switched off before installing or working on any components.

2 Wiring diagram for 230V AC connections:

Please note: The diagram shows how to use the jumper. Jumper comes included with the SQ610 Quantum.

3 Wiring diagram for control box connection:

Please note: The diagram shows how to use the jumper. Jumper comes included with the SQ610 Quantum.

Legend:
 Pump
 Valve actuator
 Heating mat
 Boiler

Boiler connection * - Boiler's contacts for ON/OFF thermostat (according to the boiler's instructions)

Technical information

Power Supply	AC 230V
Temperature range	5-35°C
Display temperature accuracy	0.5°C or 0.1°C
Control algorithm	ITLC SPAN (±0.25°C/±0.5°C) THB
S1-S2 Input (multifunctional input)	Floor temperature Air temperature Occupancy sensor One Touch Changeover (heating/cooling)
Output control	COM-NO (volt free)
Max current	3 (1) A
Communication protocol	ZigBee 2.4 GHz
Mounting	Flush mounting
Operating temperature	0-45°C
IP Protection Class	IP30
Dimensions (Width x Height - Depth)	86 x 86 x 10 mm
Thickness after mounting in a wall-box φ 60	10 mm