

**RT320RFBT**  
**RF DIGITAL**  
**THERMOSTAT**  
QUICK GUIDE

MULTI-LANGUAGE



MANUAL

**Manufacturer:** SALUS Controls plc  
Units 8-10, Northfield Business Park, Forge Way,  
Parkgate Rotherham, S60 1SD, United Kingdom

**Importer:** Salus Controls European Distribution sp.z o.o.  
ul. Szamocka 8, piętro 6., 01-748 Warszawa, Poland

UK: tech@salus-tech.com  
DE: info@salus-controls.de  
PL: poland@saluscontrols.com  
FR: technicalsupport@saluscontrols.fr  
RO: tehnic@saluscontrols.ro  
DK: Support@salus-controls.dk



[www.saluscontrols.com](http://www.saluscontrols.com)

SALUS Controls is a member of the Computime Group.  
Maintaining a policy of continuous product development  
SALUS Controls plc reserve the right to change specification,  
design and materials of products listed in this brochure  
without prior notice.



**Introduction**

The **RT320RFBT** thermostat starts in manual mode. Use **Bluetooth** mode to customize settings and create your schedule. The thermostat is designed to regulate the temperature of heating or cooling systems. It operates on 4 x AAA, 1.5V alkaline batteries, which must be inserted into the compartment behind the removable wall plate. Rechargeable batteries are not supported.

**Product Compliance**

This product complies with the essential requirements and other relevant provisions of Directives: GSPR 2023/988/EU, RED 2014/53/EU and 2025/138/EU Cyber issue, RoHS 2015/863/EU amended 2017/2102, 251 SVHC 1907/2006. The full text of the EU Declaration of Conformity is available at the following internet address: [www.saluslegal.com](http://www.saluslegal.com).  
868.0 MHz <13dBm

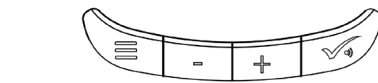
**Safety Information**

Use in accordance with national and EU regulations. Use the device as intended, keeping it in dry condition. Product for indoor use only. Installation must be carried out by a qualified person in accordance to national and EU regulations.

**Box content**

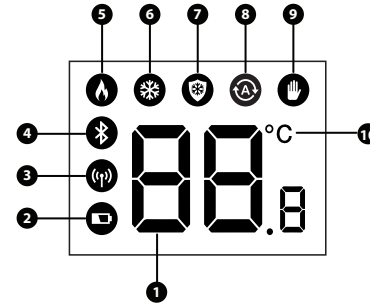


**Buttons description**



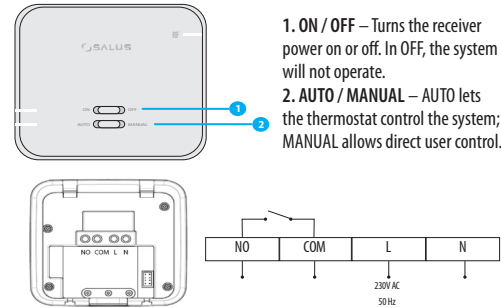
- MENU**  
Press for 5s- Enters the setting Heating or Cooling mode.  
Press for 10s- enters the installer Mode.  
Short press to switch modes (auto, manual, frost) toggle to next mode.  
If you're inside a settings screen and press the 'Menu' button, you'll return to the previous step without saving.
- MINUS**  
Decrease parameter value/moving on the menu in 'DOWN' direction
- PLUS**  
Increase parameter value/moving on the menu in 'UP' direction
- OK/Validation**  
Increase parameter value/moving on the menu in 'UP' direction
- RESET/REBOOT**  
Reset/reboot button found on the back of the thermostat (remove the back plate first).

**Icons description**



- 1. Room/Setpoint temperature
- 2. Battery indicator
- 3. RF icon
- 4. Bluetooth icon
- 5. Heating mode
- 6. Cooling mode
- 7. Frost protection
- 8. Schedule mode
- 9. Manual mode
- 10. Temperature scale in degrees Celsius

**RXRT550 receiver**

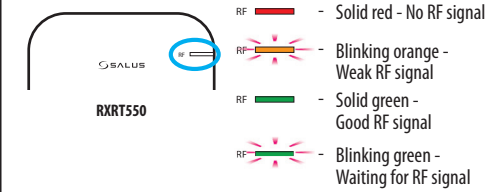


- 1. **ON / OFF** – Turns the receiver power on or off. In OFF, the system will not operate.
- 2. **AUTO / MANUAL** – AUTO lets the thermostat control the system; MANUAL allows direct user control.

**ON/OFF & AUTO/MANUAL LED Functions**

Function	LED
Pairing mode	RED LED is always on. GREEN LED flashes each 1 second.
Off mode ON: [ ] OFF: [ ]	All LEDs are off
Manual mode relay off ON: [ ] OFF: [ ] AUTO: [ ] MANUAL: [ ]	All LEDs are off. No heat/cool demand.
Manual mode relay on ON: [ ] OFF: [ ] AUTO: [ ] MANUAL: [ ]	Red LED is on. Green LED is on. Continuous Heat/cool demand.
Heat demand ON: [ ] OFF: [ ] AUTO: [ ] MANUAL: [ ]	RED LED is on. GREEN LED is on.
No heat demand ON: [ ] OFF: [ ] AUTO: [ ] MANUAL: [ ]	RED LED is on. GREEN LED is off.
Not paired	RED LED flashes 4 times every 1 second. GREEN LED is always on.

**RF LED functions**

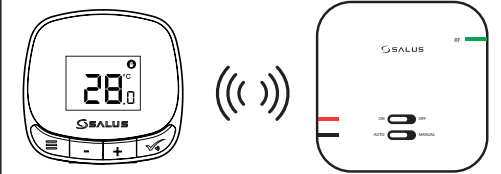


Position the thermostat and receiver within reliable RF range (RF LED color green) to ensure correct operation.

**First power up**

The thermostat and receiver come pre-paired from the factory, so no setup is needed.

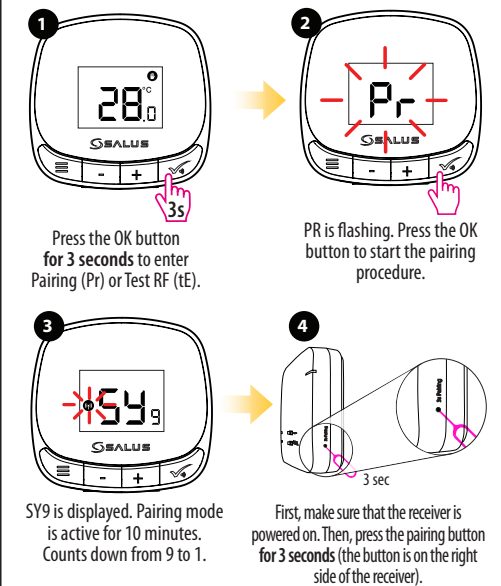
Once you turn on the thermostat and receiver, they will pair automatically.

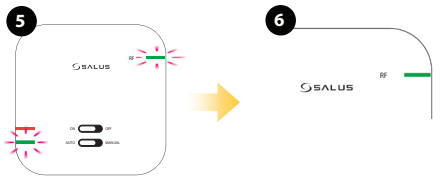


Follow the steps below if you need to re-do the pairing procedure of the thermostat and receiver.

**Pairing procedure**

Note: Make sure that the backlight is on before attempting to operate the thermostat. First press to turn the display on, then proceed with other button operations.

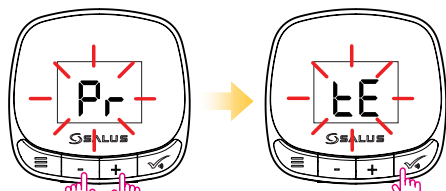




The AUTO/MANUAL LED will start blinking green. Pairing mode ON.

Pairing successful. The RF light shows solid green.

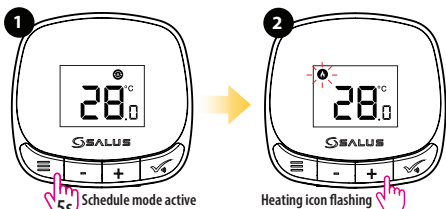
### Test RF communication



Press + or - to navigate through Pairing (Pr) or Test RF (tE) modes.

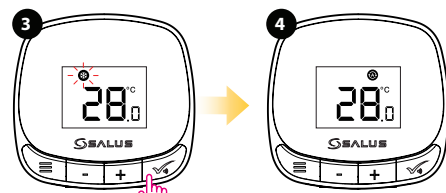
Press OK to confirm selection. Or press the MENU button to cancel selection. The thermostat will return to the Home screen.

### Choose heating or cooling



Press the Menu button for 5 seconds to enter Heat/Cool mode selection.

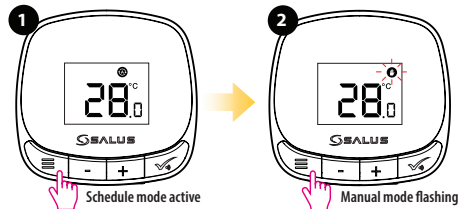
Existing mode icon is flashing. Press + or - to choose heating or cooling mode. Default mode is heating mode.



Press the OK button to choose this mode or the Menu button to return to the Home screen.

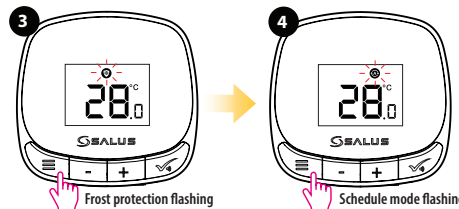
After 5 seconds of inactivity, the thermostat will return to Home screen with the chosen mode saved.

### Change thermostat mode



Short press the Menu button to switch between the thermostat modes: Schedule, Manual and Frost protection.

Short press the Menu button to go to the next mode. Or wait for 3 sec and the existing mode is saved (icon will be solid after 3 sec).



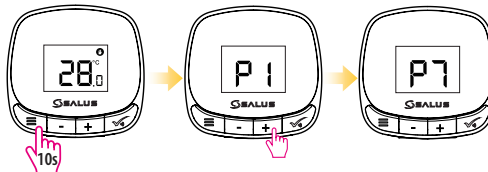
Short press the Menu button to go to the next mode. Or wait for 3 sec and the existing mode is saved (icon will be solid after 3 sec).

The modes are cyclic.

**Important:** Schedule settings can only be configured via the thermostat's Bluetooth function.

### Installer mode

To enter Installer mode, press the Menu button for 10 seconds. Use the + and - buttons to navigate through the parameters (P1 to P7) and to change settings. Use the OK button to save your settings.



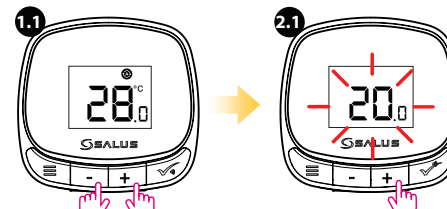
- P1 - Temperature accuracy (0.5 and 0.1 increments).
- P2 - Temperature calibration (range is between -3.5 and +3.5).
- P3 - Frost protection setpoint (range is between 5 and 17°C with 0.5 increments).
- P4 - Algorithm for temperature control (Span and ITLC, with ITLC as default):

SP (Span) → Options: 0.25, 0.5, 1, 1.5, 2°C → Press OK to confirm.

LC (ITLC) → Options: 3, 6, or 9 cycles → Press OK to confirm.

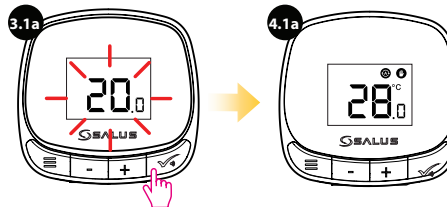
- P5 - Maximum value for setpoint (range is between 5 and 35°C with 0.5 increments).
- P6 - Minimum value for setpoint (range is between 5 and 35°C with 0.5 increments).
- P7 - Algorithm for temperature control (No - normally open, Nc - normally closed).

### Change setpoint temperature



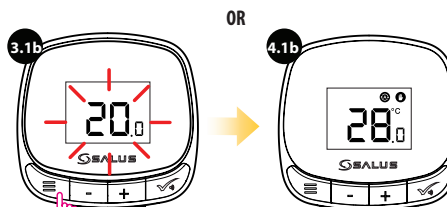
Short press the + or - button to show the setpoint temperature.

Short press the + button to increase the setpoint with 0.5°C increments.



Short press the OK button or wait for 10 seconds. Setpoint range is between 5°C and 35°C.

New setpoint is saved and the thermostat returns to the home screen.

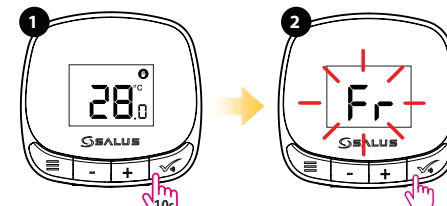


Short press the Menu button.

The thermostat returns to the Home screen. No changes saved.

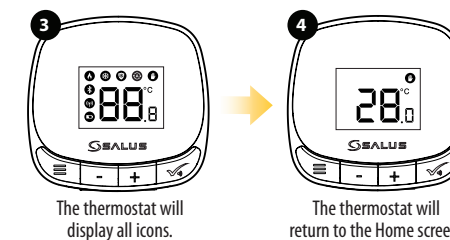
**Note:** The default setpoint for frost protection is 5°C. Short pressing the + or - buttons will have no effect in frost protection mode.

### Factory reset



Press the OK button for 10 seconds to enter Factory reset (Fr) mode.

Fr is flashing after releasing the button. Press the OK button again to confirm factory reset.

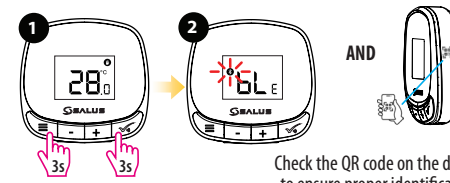


The thermostat will display all icons.

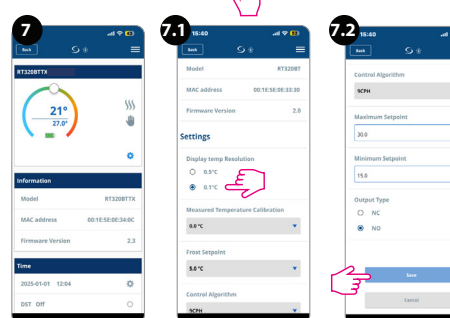
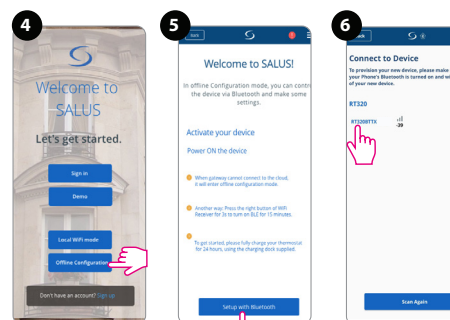
The thermostat will return to the Home screen.

### Bluetooth activation and app control

To activate Bluetooth mode, press the Menu and OK buttons for 3 seconds. The thermostat will display BLE with the Bluetooth icon flashing. Bluetooth mode is active for 10 minutes. To deactivate the mode, press the Menu button to return to the main screen.



Check the QR code on the device to ensure proper identification before Bluetooth pairing.



**Note:** Choose advanced settings by pressing the gear icon at step 7 to access more options for setting up your thermostat. Don't forget to save your settings.