



Importer:
SALUS Controls Plc
Units 8-10 Northfield Business Park
Forge Way, Parkgate, Rotherham
S60 1SD, United Kingdom



Introduction

The KL04NSB24V module is an extension to the KL08NSB24V wiring centre with another 4 heating zones. It works only in combination with the KL08NSB24V wiring centre and increases the functionality of the combined set to 12 individually controlled heating zones.

Product compliance

Directives: Electromagnetic Compatibility Directive EMC 2014/30 / EU, Low Voltage Directive LVD 2014/35 / EU and RoHS Directive 2011/65 / EU.

Full information is available at www.saluslegal.com

Safety information

Use in accordance with the regulations in force in a given country and in the EU. The device should be used in accordance with its intended purpose, avoiding moisture. The product is for indoor use only. Installation must be carried out by a qualified person, in accordance with the rules in force in the country and in the EU.

Before performing any activities related to the power supply (connecting cables, device installation, etc.), make sure that the wiring centre and the module are not connected to the mains! Installation should be performed by a person with appropriate electrical qualifications. Incorrect wiring may damage the devices. The module cannot be used in conditions of water vapor condensation, nor can it be exposed to water.

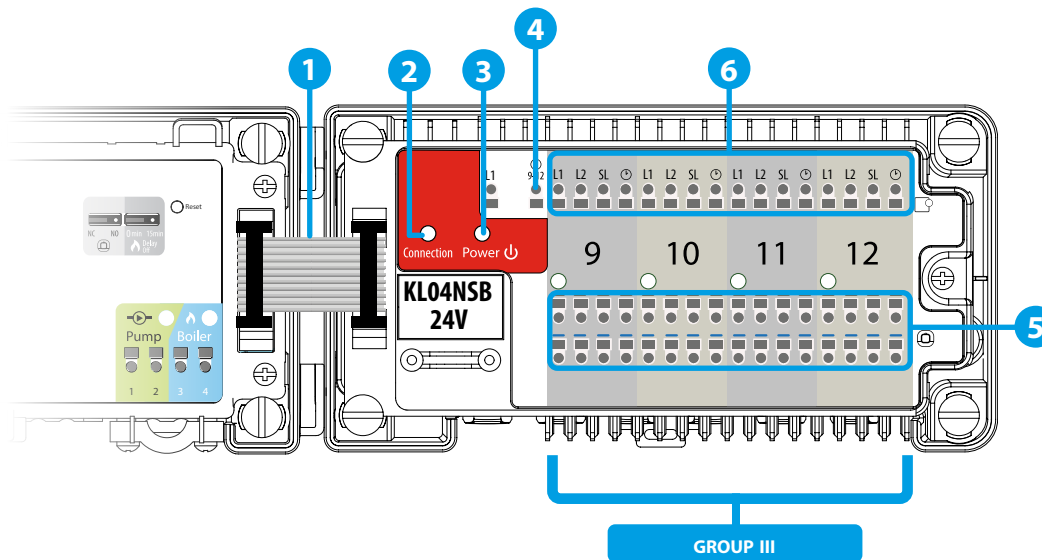
Technical Information

Power supply	From KL08NSB24V wiring centre
Rating max	3 A
Output	24V AC thermoelectric actuator
Dimension [mm]	163 x 85 x 67

Wiring centre description

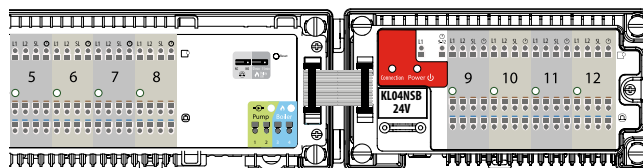
1. Serial connector
2. Connection LED diode
3. Power LED diode

4. NSB function terminals
5. Actuators connection
6. Thermostats connection



1. Serial connector

The Serial connector is used to connect the KL08NSB 24V with the KL04NSB 24V extension module to add functionality and support up to 12 zones



2. Connection LED diode

Correct connection of the KL08NSB24V wiring centre with the KL04NSB24V module is indicated by a glowing red diode (Connection).

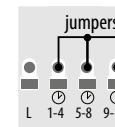
3. Power LED diode

When the module is connected to the power supply, the red LED (Power) lights up.

4. NSB function terminals

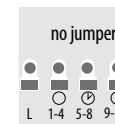
The NSB function is activated in the Salus Expert series daily thermostats, eg. HTR, by means of an external clock or weekly thermostats of the said series. Daily thermostats, receiving the NSB signal, lower the set temperature (by switching to the economy mode). All thermostats must be connected with a 4-wire cable (min. 4 x 0.75 mm², max. 4 x 1.5 mm²).

• OPTION 1



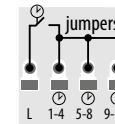
One Master thermostat common for Group 1, Group 2 and Group 3 thermostats (one weekly thermostat, eg. VS30, other daily thermostats, eg. VS35).

• OPTION 2



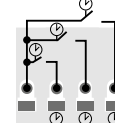
Three Master Thermostats. One for Group 1, one for Group 2 and one for Group 3 thermostats (three weekly thermostats, eg. VS30, other daily thermostats, eg. VS35).

• OPTION 3



One external clock, common for Group 1, Group 2 and Group 3 thermostats (one external clock, daily thermostats, eg. VS35).

• OPTION 4

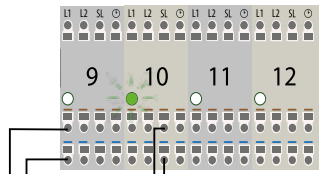


Three external clocks. One for Group 1, one for Group 2 and one for Group 3 thermostats (three external clocks, daily thermostats, eg. VS35).

Note: The 1-4 terminals and 5-8 are on the KL08NSB24V wiring centre, and the 9-12 terminals are on the KL04NSB24V extension module.

6. Actuators connection

The actuator wires should be secured with the self locking connectors in the appropriate zone. Up to 6 actuators with a load of up to 2 Watts each can be connected to a single zone. Should more than 6 actuators be required in a zone use an additional relay to relieve the output.

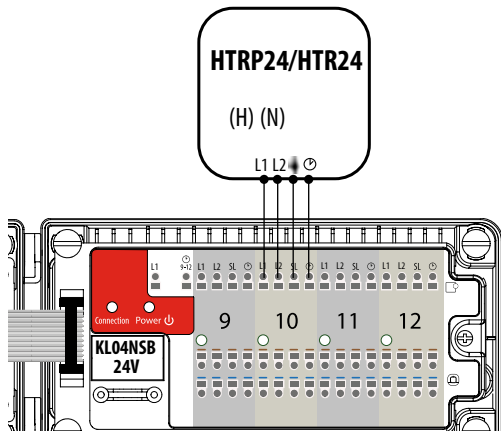


Note: 24 V AC voltage when actuators are live

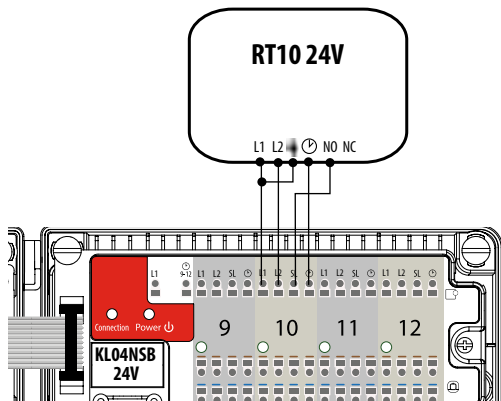
Example based on T30NC 24 V actuators

7. Thermostats connection

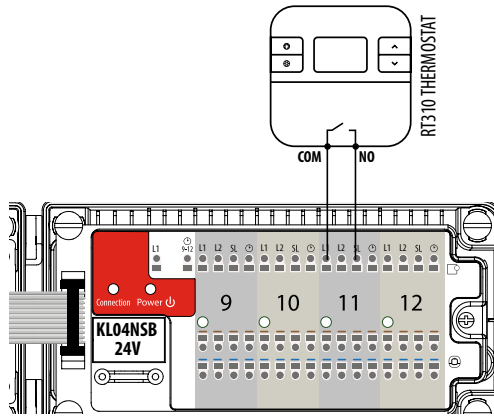
• Connection of EXPERT, HTR series thermostats.



• 24 V thermostat connection (e.g. RT1024V)

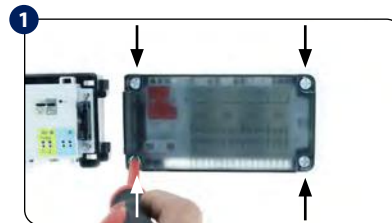


• ON / OFF (battery) thermostat connection with voltage-free COM / NO output contacts (e.g. 091FL, RT310, RT510)



Note: The following symbols are used interchangeably in the NSB, HTR, ERT, BTR series products:
 ↑ = SL
 ⊕ = NSB

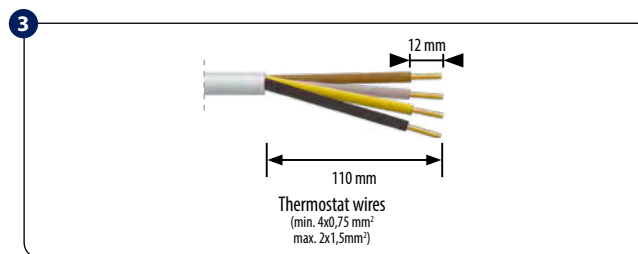
INSTALLATION



Remove the top cover of the wiring centre extension and unscrew the main housing.

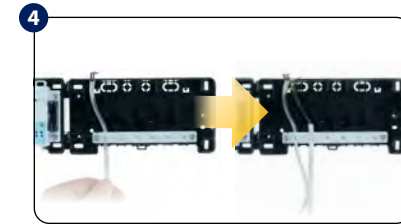


Mount the back side of the housing to the wall. When mounting on a DIN rail, open the hooks on the back of the housing.

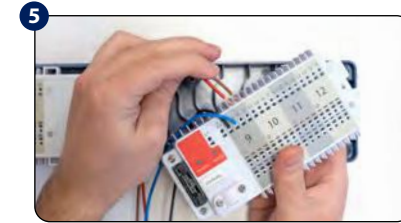


Remove the appropriate piece of insulation from the wires.

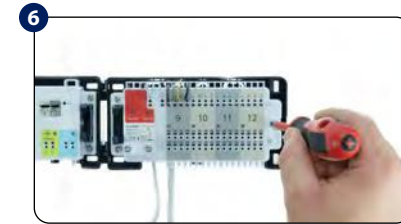
Set includes supplementary accessories (to support installation proces).



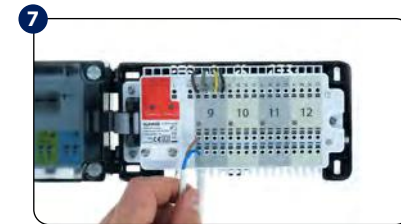
Thread the wires under the mounting belt in the back part of the wiring centre extension.



Thread the wires through the slots in the top part of the wiring centre extension and connect it to the terminals.



Adjust the wires and screw the main housing of the wiring centre extension to the rear housing.



Connect the thermoelectric actuators wires.



Connect the serial cable to the KL08NSB 24V and KL04NSB 24V connector.



Make sure that all the wires are properly connected, mount top cover and power up the wiring centre and wiring centre extension - "Power" and "Connection" red LED diodes will light up indicating the correct connection with the KL08NSB 24V wiring centre.