

CTC
**CURRENT
TRANSFORMER
CLAMP**

QUICK GUIDE



SALUS Controls plc
Units 8-10, Northfield Business Park, Forge Way,
Parkgate Rotherham, S60 1SD, United Kingdom

SALUS Controls GmbH
Dieselstrasse 34, 63165 Mühlheim am Main, Germany

UK: tech@salus-tech.com
DE: info@salus-controls.de
PL: poland@saluscontrols.com
FR: technicalsupport@saluscontrols.fr
RO: tehnic@saluscontrols.ro
DK: Support@salus-controls.dk



www.saluscontrols.com

SALUS Controls is a member of the Computime Group. Maintaining a policy of continuous product development SALUS Controls plc reserve the right to change specification, design and materials of products listed in this brochure without prior notice.



Introduction

Charging your electric vehicle can put high demand on your home's electrical supply, especially when other appliances are running at the same time. This can sometimes cause the main fuse to trip.

The SALUS CT Clamp (CTC) works with your SALUS EV Charger to prevent this. Fitted to the incoming mains supply, it continuously monitors your household's electricity usage.

If the total demand approaches the supply limit, the system automatically adjusts the charging power to prevent overload — ensuring safe and reliable operation at all times.

Please Note: The Load Curtailment feature is available on single-phase models EV7EU, EVT7EU, EV7UK and EVT7UK.

Product Compliance

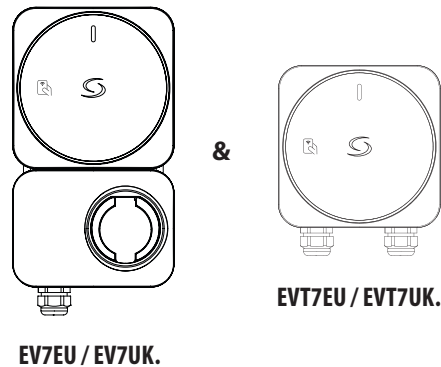
This product complies with the essential requirements and other relevant provisions of Directives GPSR 2023/988, 2025/138/EU (RED), RoHS 2015/863 and 2017/2102 amending Annex II to Directive 2011/65/EU and SVHC 251 (REACH). The full text of the EU Declaration of Conformity is available at the following internet address: www.saluslegal.com.

Safety Information

Installation of the SALUS CT Clamp (CTC) must be carried out by a qualified and competent electrician in accordance with current wiring regulations. The mains supply must always be isolated before installation or servicing. The CT Clamp must be fitted correctly to the incoming live mains conductor as instructed, as incorrect installation may result in inaccurate readings or improper operation. The device must not be opened, modified or tampered with and is intended for indoor use only, installed in a dry and protected location. Failure to follow these instructions may result in equipment damage or risk to personal safety.

Compatibility

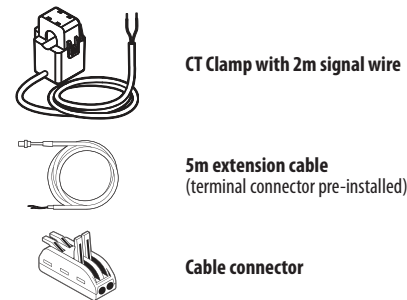
The Load Curtailment feature is available on single-phase SALUS EV Charger models EV7EU, EVT7EU, EV7UK and EVT7UK. The SALUS CT Clamp (CTC) is designed to operate with these models, enabling load curtailment for safe and efficient charging.



Important notes

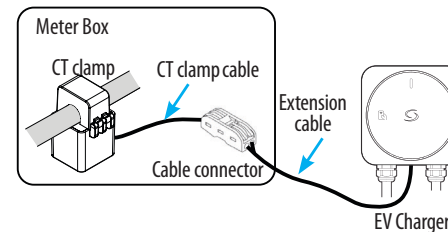
1. Installation and servicing must be carried out by qualified personnel only.
2. Switch off power at the circuit breaker before installing the CT clamp.
3. The Load Curtailment function requires firmware v2.0.40 or later
4. If the total demand is too high, the charger will automatically lower its charging current.
5. Charging will stop if the available capacity falls below 6 A.
6. Load Curtailment reduces overload risk but cannot prevent all trips caused by wiring, supply issues or other loads.
7. Always follow this manual. Incorrect installation or misuse may cause damage, safety hazards or fuse tripping.
8. Stop using the system immediately if a fault is detected and consult a qualified professional.

Box Content

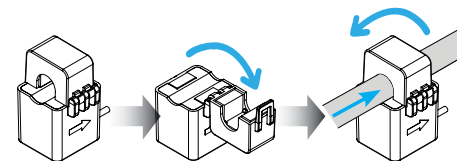


Installation for EVT7EU and EVT7UK

This section describes how to install the CT clamp and connect it to the EV charger. The accompanying figure provides a general overview of the installation for EVT7EU and EVT7UK.

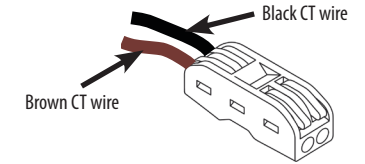


1. Position the CT clamp around the incoming live supply cable in the meter box, before the consumer unit. Ensure the arrow on the clamp points toward the property's electrical load.

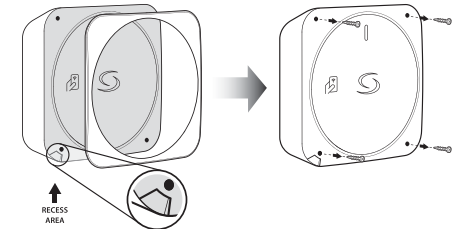


Please Note: The CT clamp has a maximum primary rated current of 100A.

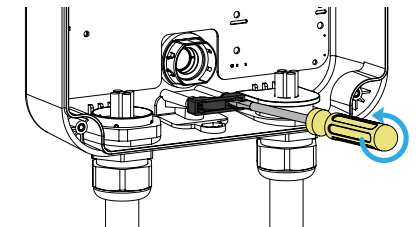
2. Firmly insert the CT clamp wires into one side of the connector accessory. The opposite side is designated for attaching the extension cable wires.



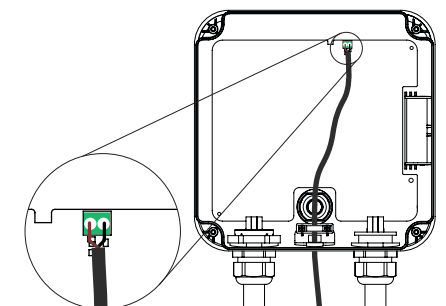
3. To wire the CT clamp inside the EV charger, first remove the decorative cover using the recessed slot area, then unscrew the indicated screws to remove the inner cover.



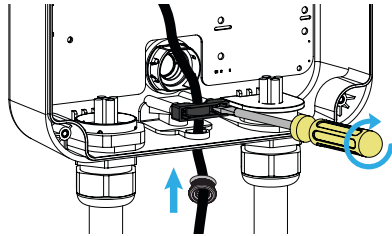
4. Loosen the cable clamp from the bottom side using a screwdriver.



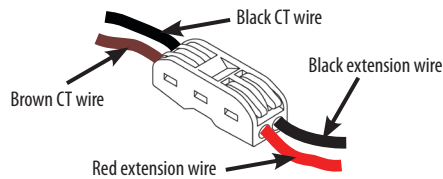
5. Connect the extension cable to the CT clamp input terminal at the top of the EV charger. Route the remaining cable through the bottom cable-exit hole, as shown.



- 6** Seat the grommet fully to maintain the seal at the bottom of the EV Charger. Avoid twisting the connector and tighten the clamp only enough for strain relief.



- 6** Insert the CT clamp wires into one side of the connector and the extension cable wires into the other side. Push firmly until they lock. Ensure the red extension wire is opposite the brown CT wire, as shown. Gently pull to confirm the connection is secure.



- Please Note:** The CT clamp includes a 2 m (26 AWG) cable. The total distance between the CT clamp and EV charger can be extended up to 50 m.

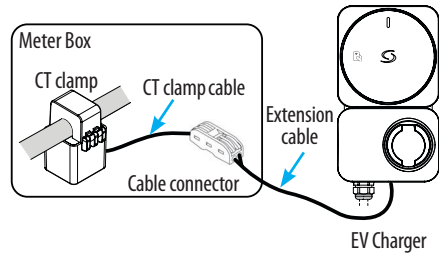
- 7 Set the household current capacity**
Turn the rotary switch to match your property's main supply rating. The switch is located at the back of the EV Charger's front cover.

POSITION	CAPACITY
0	Load curtailment feature OFF
1	60A
2	80A
3	100A
4	25A
5	32A
6	40A
7	50A

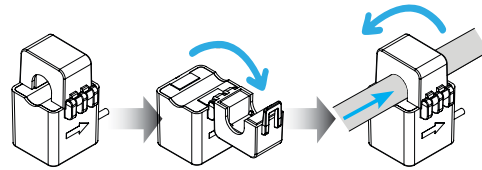
- Please Note:** This setting must match the maximum current rating of your main breaker or fuse. For safety, the charger automatically limits charging power to 80% of the selected value to prevent overload.

Installation for EV7EU and EV7UK

This section describes how to install the CT clamp and connect it to the EV charger. The accompanying figure provides a general overview of the installation for EV7EU and EV7UK.

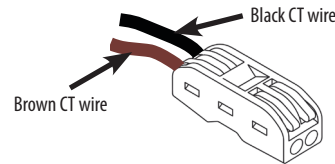


- 1** Position the CT clamp around the incoming live supply cable in the meter box, before the consumer unit. Ensure the arrow on the clamp points toward the property's electrical load.



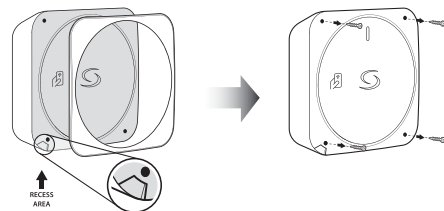
- Please Note:** The CT clamp has a maximum primary rated current of 100A.

- 2** Firmly insert the CT clamp wires into one side of the connector accessory. The opposite side is designated for attaching the extension cable wires.



- 3** To wire the CT clamp inside the EV charger, first remove the upper and lower covers. Release the decorative cover using the recessed slot, then unscrew the indicated screws to remove the inner cover.

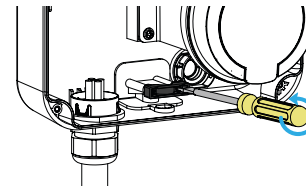
UPPER UNIT



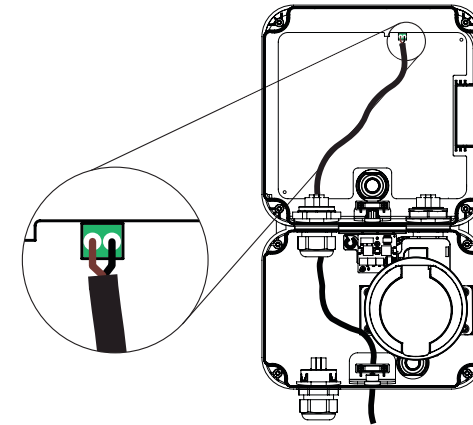
LOWER UNIT



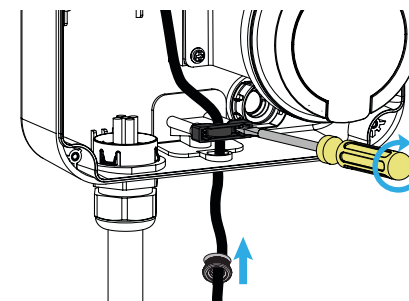
- 4** Loosen the cable clamp from the bottom side using a screwdriver.



- 5** Connect the extension cable's connector to the CT clamp input terminal at the top of the EV charger. Then route the remaining length of cable through the cable-exit hole at the bottom of the unit, as shown.

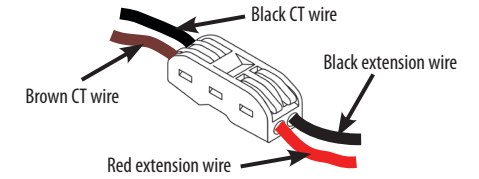


- 5** Seat the grommet fully to maintain the seal at the bottom of the EV Charger. Avoid twisting the connector and tighten the clamp only enough for strain relief.



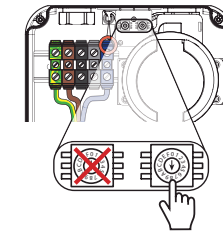
- 6** Insert the CT clamp wires into one side of the connector and the extension cable wires into the other side. Push firmly until they lock.

Ensure the red extension wire is opposite the brown CT wire, as shown. Gently pull to confirm the connection is secure.



- Please Note:** The CT clamp includes a 2 m (26 AWG) cable. The total distance between the CT clamp and EV charger can be extended up to 50 m.

- 7 Set the household current capacity**
Turn the rotary switch to match your property's main supply rating. The switch is located on the underside of the EV charger, adjacent to the charging socket.



POSITION	CAPACITY
0	Load curtailment feature OFF
1	60A
2	80A
3	100A
4	25A
5	32A
6	40A
7	50A

- Please Note:** This setting must match the maximum current rating of your main breaker or fuse. For safety, the charger automatically limits charging power to 80% of the selected value to prevent overload.

Technical Specifications

CT clamp

Window size	16 mm
Maximum input current	100 A
Output current	33 mA
Turn ratio	1:3000
Frequency	50-60Hz
Operating temperature range	-30 °C to +70 °C
Rated operating voltage	AC 0.66kV
Output cable	2 m, 26 AWG, sheathed

Extension cable with pre-installed terminal connector

Signal cable	5 m, UL2516#20/2C
Dimensions	37 x 49 x 42 mm