

Quick Guide

HEAD OFFICE

SALUS Controls, Units 8-10, Northfield Business Park, Forge Way, Parkgate Rotherham, S60 1SD
 SALUS Controls GmbH, Dieselstrasse 34, 63165 Mühlheim am Main, Germany

UK: tech@salus-tech.com
 DE / NL: info@salus-controls.de
 FR: technicalsupport@saluscontrols.fr
 RO: tehnic@saluscontrols.ro
 DK: Support@salus-controls.dk

www.saluscontrols.com



SALUS Controls is a member of the Computime Group. Maintaining a policy of continuous product development SALUS Protect which is made up SALUS Controls and Safe4 reserves the right to change specification, design and materials of products listed in this brochure without prior notice.



V01
XII/2024

Introduction

The SALUS WQ615TX thermostat and WQ615RX receiver form a versatile package designed for effective management of electric heating systems utilizing the Zigbee protocol. This ultra-slim, wireless programmable thermostat is rechargeable and operates on a lithium-ion battery. The receiver can be set up as a master unit, allowing it to connect with up to four additional slave receivers, thereby creating a unified and synchronized network for controlling multiple infrared panels. Each WQ615RX receiver can function as either a master or a slave, depending on the system's requirements, ensuring smooth control and integration. This flexibility allows for effortless management of the entire heating or cooling system, improving the efficiency and responsiveness of your setup.

Product Compliance

These products comply with the essential requirements and other relevant provisions of Directives 2014/53/EU and 2015/863/EU. The full text of the EU Declaration of Conformity is available at the following internet address: www.saluslegal.com.

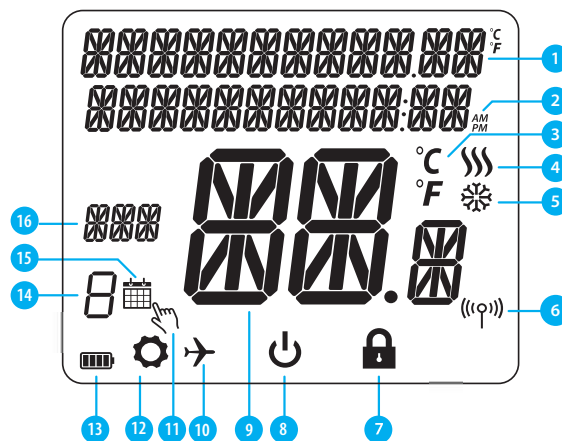
(P) 2405-2480MHz; <14dBm

Safety Information

To ensure both safety and optimal performance, the WQ615TX thermostat and the WQ615RX receiver should be used in accordance with all relevant regulations. These devices are designed exclusively for indoor use and must not be installed in environments exposed to extreme temperatures or other harsh conditions. Keep the receiver completely dry; any inadequate installation may cause damage or malfunction. Always disconnect the power before cleaning and use a dry cloth only. For safe operation, position the WQ615TX thermostat and install the WQ615RX receiver at a convenient height to allow easy access. The devices' maximum operating temperature is 50°C, so avoid placing them in locations that may exceed this limit to prevent overheating.

Button functions

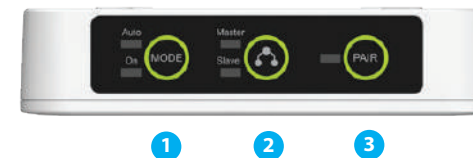
WQ615TX Thermostat



- | | |
|--|---|
| 1. Menu/Settings + Clock | 9. Current temperature/ Set temperature |
| 2. AM/PM | 10. Vacation mode |
| 3. Temperature measurement unit | 11. Temporary change mode when there is heat demand |
| 4. Heating indicator (icon is animated when there is heat demand) | 12. Settings icon |
| 5. Cooling indicator (icon is animated when there is cooling demand) | 13. Battery indicator |
| 6. RF connection indicator | 14. Current active program |
| 7. Locked keys indicator | 15. Program mode icon |
| 8. OFF mode icon | 16. Day/Status indicator |

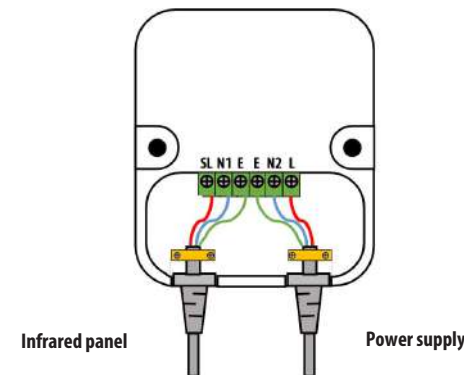
Button	Function
	1) Menu button / Return button. 2) In MAIN DISPLAY: Press and hold for 3 sec to change the thermostat operating mode (Program Mode / Permanent Mode / Temporary Cancel Mode). 3) In SETTINGS DISPLAY: Press and hold for 3 sec to return without saving changes.
	"Down" button (Decreases parameter value/menu movement in the "DOWN" direction)
	"Up" button (Increases parameter value/menu movement in the "UP" direction)
	1) Press and hold for 3 seconds to START the new device 2) "OK / Tick" button (Confirm parameter value / Go to next menu / Save settings) 3) In MAIN DISPLAY: Press and hold for 3 seconds to enter Standby mode. 4) In the SETTINGS DISPLAY: Press and hold for 3 seconds to return to the MAIN DISPLAY and SAVE all changes. 5) During PAIRING - Press and hold for 3 seconds to turn the thermostat off or restart the thermostat
	In the MAIN DISPLAY - press and hold these buttons together for 3 seconds to LOCK/UNLOCK the thermostat keys).

Receiver buttons



- MODE button:** Auto/On/Off selection
- Master/Slave selection:** Master can control up to 4 slaves
- PAIR button** for quick pairing procedure

Wiring diagram



Pairing process

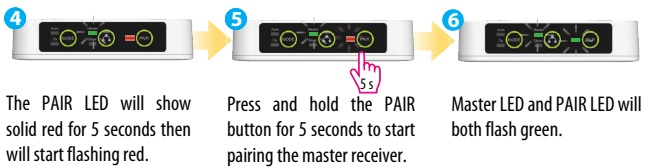
Note: The WQ615TX thermostat comes prepared with the WQ615RX receiver, which can also be linked to an additional 4 more receivers (5th slave will be rejected), all connected to infrared heating panels. To start a new pairing process, it is necessary to factory reset the devices.



1 Power up the receiver. PAIR LED will flash red. Slave LED will flash green.

2 Short press the Master/Slave button to change to Master.

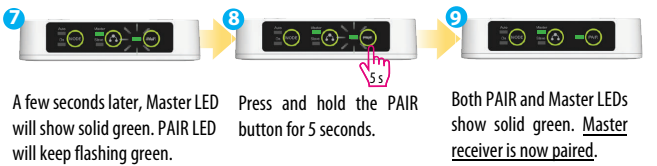
3 Press and hold the PAIR button for 10 seconds to reset the master receiver.



4 The PAIR LED will show solid red for 5 seconds then will start flashing red.

5 Press and hold the PAIR button for 5 seconds to start pairing the master receiver.

6 Master LED and PAIR LED will both flash green.



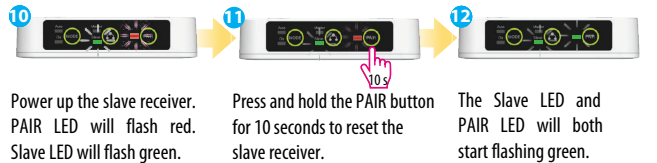
7 A few seconds later, Master LED will show solid green. PAIR LED will keep flashing green.

8 Press and hold the PAIR button for 5 seconds.

9 Both PAIR and Master LEDs show solid green. Master receiver is now paired.

Pairing a slave receiver (optional)

Note: Skip steps 10 - 15 if you only pair one master receiver. Resume pairing from step 16.



10 Power up the slave receiver. PAIR LED will flash red. Slave LED will flash green.

11 Press and hold the PAIR button for 10 seconds to reset the slave receiver.

12 The Slave LED and PAIR LED will both start flashing green.



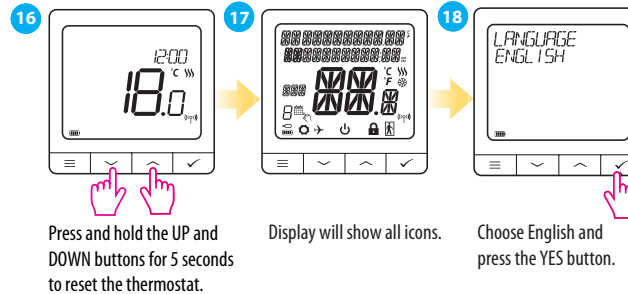
13 Press and hold the PAIR button for 5 seconds ON THE MASTER RECEIVER to start pairing the SLAVE receiver.

14 The PAIR LED on the master receiver will start flashing green.

15 Wait until Slave LED and PAIR LED both show solid green on the slave receiver. Slave receiver is now paired.

Note: Repeat the slave pairing process to connect up to a maximum of 4 slaves.

- Resetting the master: master deletes the thermostat, all slaves and coordinator information.
- Resetting the slave: slave deletes its own connection information and leaves the ZigBee network.



16 Press and hold the UP and DOWN buttons for 5 seconds to reset the thermostat.

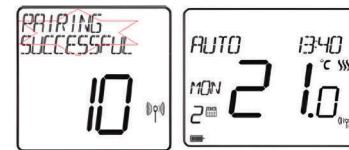
17 Display will show all icons.

18 Choose English and press the YES button.

19 In the home screen, press the button to enter settings. Then, press the button for a few times, go to [PAIR WITH RECEIVER], press the select YES and press the button again to start pairing with the receiver.



20 If paired successfully, the thermostat will display [PAIRING SUCCESSFULL], then, after a few seconds, will go to the home screen.



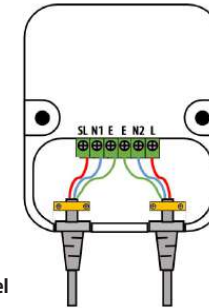
21 After setting the temperature on the thermostat, receiver will show solid GREEN LEDs (AUTO, MASTER/SLAVE, PAIR).



Note: If the user wants to replace one or more existing paired slave receiver, user MUST let the WQ610TX thermostat, master and slave receivers do factory reset and pair again. In case of mistake or broken receivers, user will need to do factory reset of Master and then redo all pairing process of WQ610TX and Slaves.

Note: If master/slaves do not receive RF signal from master for over 1 hour in Auto mode, they will enter fail safe mode. In the fail safe mode, they will turn on relay for 5 min and turn off again for 55 min and repeat until RF signal is reconnected. When reconnected, slaves are re-controlled by master again. In manual ON or OFF mode, no fail safe mode.

Wiring diagram



Infrared panel

Power supply

Product specifications (thermostat)

Local communication	ZigBee 2.4 GHz
Input Power	Rechargeable Li-Ion battery
Receiver rating max	10 (5) A
Outputs	230V SL
Radio frequency	2.4 GHz
Operating Temperature	0°C to 50°C
Storage Temperature	-30°C to 50°C
Safety Approval	Class II

Dimensions

- Thermostat:** 86mm(W) x 86mm(H) x 11mm(D)
- Receiver:** 100mm(W) x 110mm(H) x 22mm (D)

