

**SUPER-QUIET TRV**

Model: TRV3RF



MULTILINGUAL  
MANUAL



Quick Guide



SALUS Controls, Units 8-10,  
Northfield Business Park,  
Forge Way, Parkgate  
Rotherham, S60 1SD

SALUS Controls GmbH,  
Dieselstrasse 34,  
63165 Mühlheim am Main,  
Germany

Email: tech@salus-tech.com



www.saluscontrols.com

SALUS Controls is a member of the Computime Group  
Maintaining a policy of continuous product development SALUS  
Controls plc reserves the right to change specifications, design  
and materials of products listed in this brochure without prior notice.



**Introduction**

The TRV3RF is an advanced, cutting-edge Thermostatic Radiator Valve (TRV) and the quietest on the market designed for seamless home comfort and energy efficiency, making it ideal for noise-sensitive environments. The TRV3RF features a sophisticated modulating head, enabling precise control by gradually opening or closing the valve based on room temperature.

Using an intelligent temperature compensation algorithm, the TRV3RF dynamically adjusts to environmental factors such as radiator heat, drafts, or sunlight. This ensures consistent, accurate room temperatures while optimizing energy efficiency. Perfect for modern, energy-conscious homes, the TRV3RF delivers tranquility, comfort, and sustainability in one innovative package.

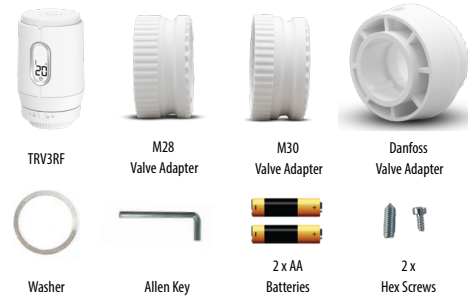
**Product Compliance**

This product complies with the essential requirements and other relevant provisions of Directives 2014/53/EU and 2015/863/EU. The full text of the EU Declaration of Conformity is available at the following internet address: www.saluslegal.com.  
 (P) 2405-2480MHz, <14dBm

**Safety Information**

Use in accordance to national and EU regulations. Use the device as intended, keeping it in dry condition. Product for indoor use only. Installation must be carried out by a qualified person in accordance to national and EU regulations.

**Box Content**



**Device Compatibility**

The TRV3RF is compatible with the IT600 series (SQ610, VS10RF, VS20RF, SQ610RF) and Elypso series. Please note that it functions exclusively with UG600, UGE600, and UG800 gateways.

**Gateways**



**Receivers**



**Thermostats**

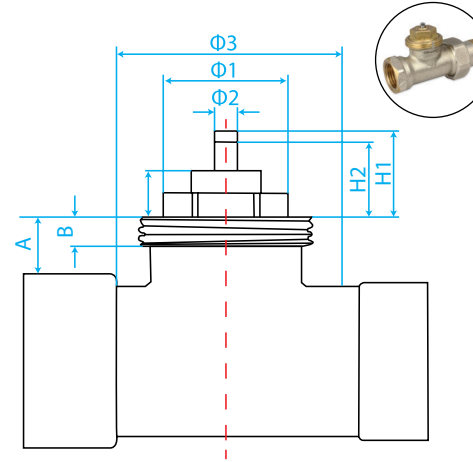


**Valve compatibility**

The TRV3RF includes three adapters designed for compatibility with a wide range of valves available on the market. Before beginning the installation, please verify that your existing valves are compatible with the provided adapters:

- **M28** (with or without washer)
- **M30**
- **Danfoss** valves

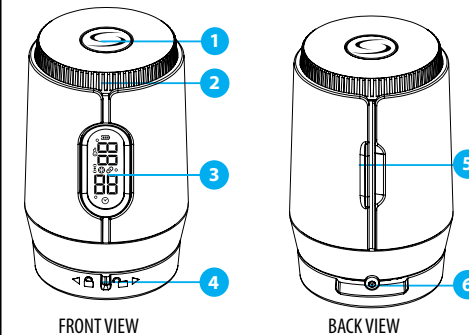
This step ensures proper functionality and a seamless installation process.



M28 (with washer)	M28 (without washer)	M30
A > 9.5 mm	A > 9.5 mm	A > 6 mm
5.3 < B < 8 mm	5.3 < B < 8 mm	B < 5.1 mm
Φ1 < 21 mm	Φ1 < 21 mm	Φ1 < 7.2 mm
Φ2 < 7 mm	Φ2 < 7 mm	Φ2 < 25 mm
Φ3 < 35.5 mm	Φ3 < 35.5 mm	Φ3 < 36.5 mm
H1 < 12.7 mm	H1 < 12 mm	H1 ≤ 15.5 mm
H2 > 8.7 mm	H2 > 8.0 mm	H2 ≥ 11 mm
7.5 < H3 < 8 mm	H3 < 7.5 mm	H3 ≤ 10.2 mm

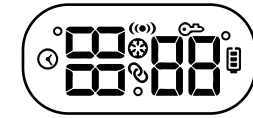
\*For Danfoss valve we can proceed with the provided RA adapter.

**Product description**



1. Function / Setup Button
2. Dial Ring
3. Digital Display
4. Lock / Unlock Valve Adapter
5. Battery cover
6. Locking pin

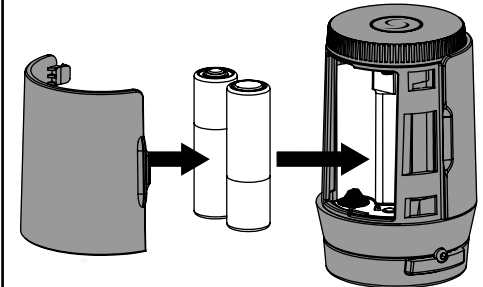
**Icons and Display**



	Battery Level
	Key Lock
	RF Status
	Off Mode (Frost Protection)
	Binding Status
	Schedule Mode
	Temperature and Other Information for Vertical Positioning of TRV
	Temperature and Other Information for Horizontal Positioning of TRV

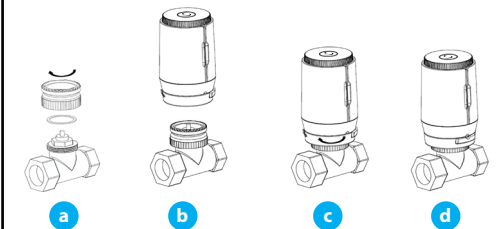
**Installation Process**

- 1 Remove the battery cover and insert the batteries in the TRV as shown in the image below.



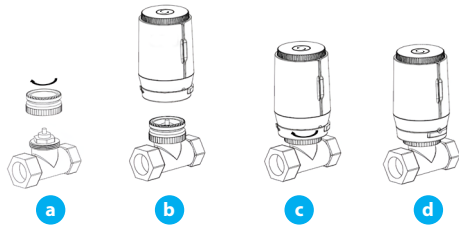
- 2 Mount the TRV head on the radiator's valve using the destined adaptor.

**M28** - Please check if your valve requires the washer for proper installation.



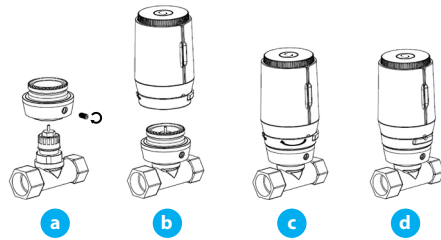
**Note:** The adapter must be securely screwed onto the valve by hand. Avoid using tools to tighten the adapter, as this could damage the components or affect compatibility.

M30 - Follow the instructions below.



**Note:** The adapter must be securely screwed onto the valve by hand. Avoid using tools to tighten the adapter, as this could damage the components or affect compatibility.

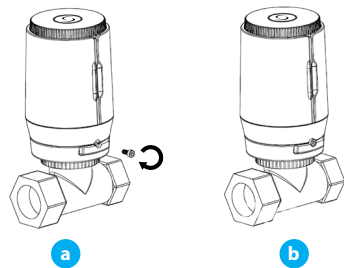
**Danfoss Valve** - Follow the instructions below.



**Note:**

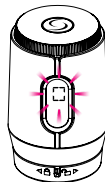
- The adapter must be securely screwed onto the valve by hand. Avoid using tools to tighten the adapter, as this could damage the components or affect compatibility.
- Use the supplied Allen key to secure the adapter in place by tightening the provided socket head screw.

**Optional** - The TRV features a locking pin, secured with the supplied hex screw, which can be tightened using an Allen key to prevent unwanted dismantling from the adaptor and ensure added security.



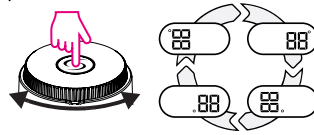
## First Setup

- Upon initial power-up, the display will indicate the symbol . This symbol will remain visible until the actuator stem is fully retracted. No input needed while this symbol is active.



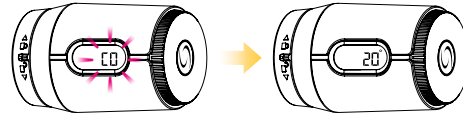
2

Adjust the display orientation by using dial ring to accommodate the TRV's installation in any position, whether horizontal or vertical. Confirm by pressing Setup button.



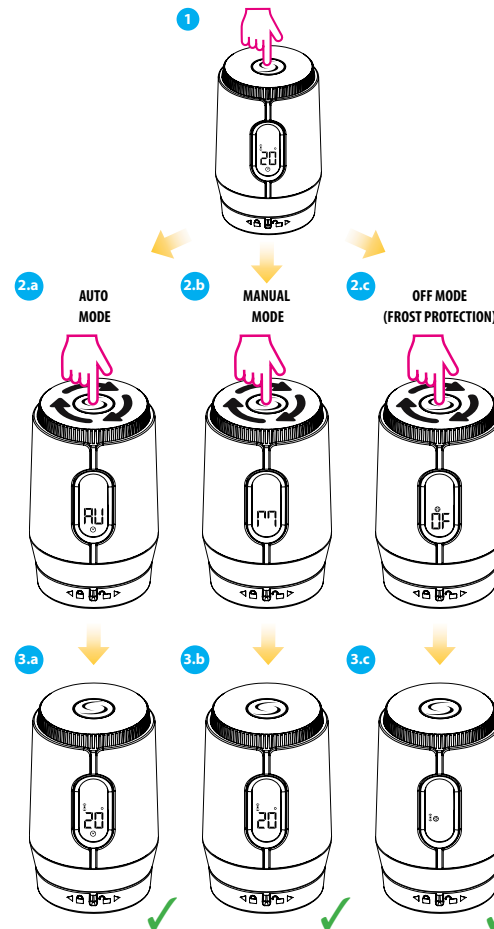
3

**Calibration mode** - After adjusting the display orientation, the TRV will enter calibration mode, and the screen will display: . Once the calibration is complete, the screen will display the setpoint temperature.

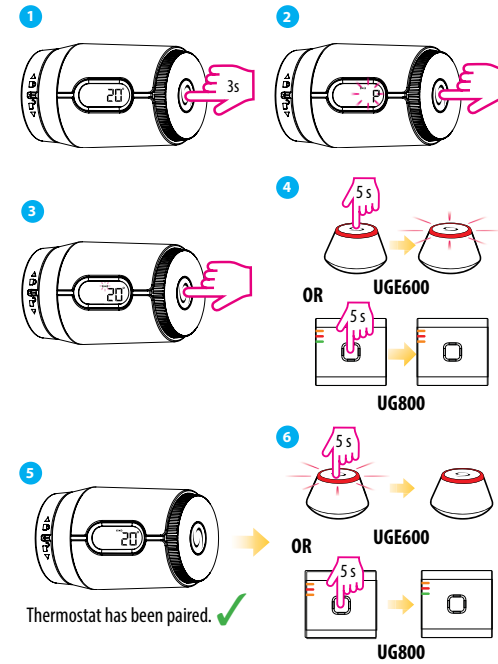


Ensure the valve is installed prior to calibration. Failure to do so will result in the display showing the error code.

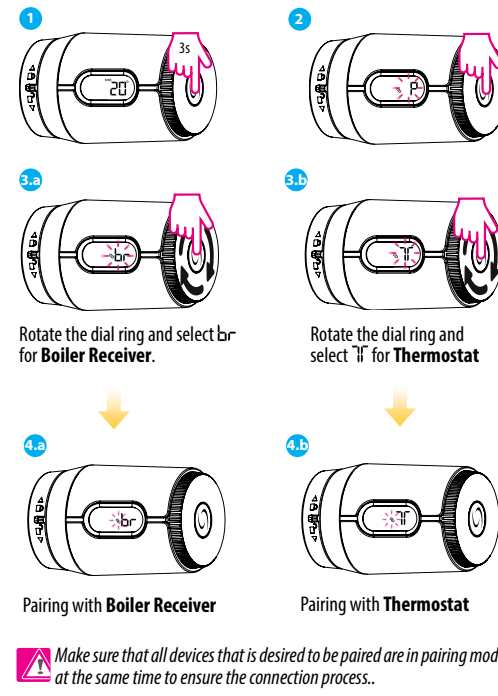
## Operation Modes



## TRV Pairing with Gateway in Offline Mode



## TRV Pairing with Thermostat and/or Receiver in Offline Mode



## TRV Pairing with Gateway in Online Mode



## TRV Pairing with Thermostat in Online Mode

