

SR600
SMART RELAY
QUICK GUIDE



Manufacturer:
SALUS Controls plc
Units 8-10, Northfield Business Park, Forge Way,
Parkgate Rotherham, S60 1SD, United Kingdom

Importer:
Salus Controls European Distribution sp.z o.o.
ul. Szamocka 8, piętro 6., 01 748 Warszawa, Poland

UK: tech@salus-tech.com
DE / NL: info@salus-controls.de
PL: poland@saluscontrols.com
FR: technicalsupport@saluscontrols.fr
RO: tehnic@saluscontrols.ro
DK: Support@salus-controls.dk

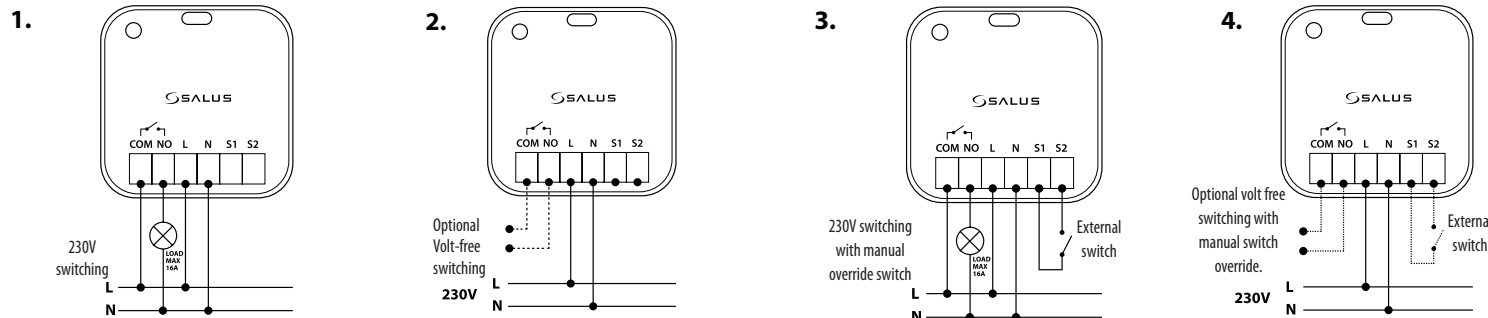


www.saluscontrols.com

SALUS Controls is a member of the Computime Group. Maintaining a policy of continuous product development SALUS Controls plc reserve the right to change specification, design and materials of products listed in this brochure without prior notice.



Wiring diagrams



Terminals description

COM / NO	Common / normally open terminals.
L, N	Power supply 230 V AC
S1/S2	Switch input terminal

Button functions

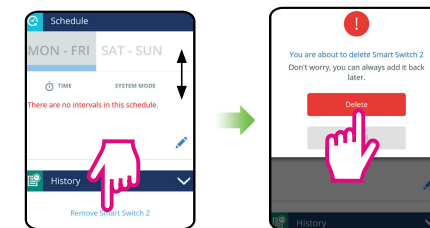


To identify the device, short press the button.
To enter pairing mode, press and hold the button for 3 seconds.
To do a factory reset, press and hold the button until LED flashes red (max 15 sec).

S1 & S2 Terminals

Option	Description
1. No function	App control only. Disables external switch.
2. Switch on and off output	External S1/S2 switch control only. App control is disabled.
3. Switch toggle relay	App and external switch control combined (working together).
4. Reverse output	App and switch control with pulse/latch behaviour.
5. No output control	Virtual S1/S2 switch via app. This option creates the virtual switch (controlled via the app).

Remove device from network



Introduction

Smart Relay (SR600) is a switching relay product that can be used to power on or off a maximum 16A load. It can be installed directly within a wall box or surface mounted onto the wall (using the optional SRS600 wall mount bracket). This product must be used with the Universal Gateway (purchased separately).

The Universal Gateway allows communication with other SALUS Smart Home products using the SALUS Premium Lite App.



Product Compliance

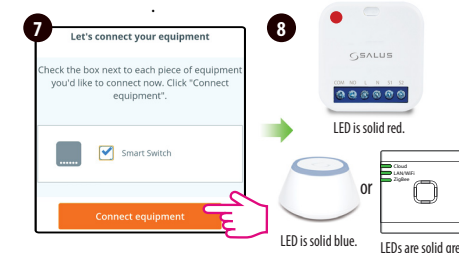
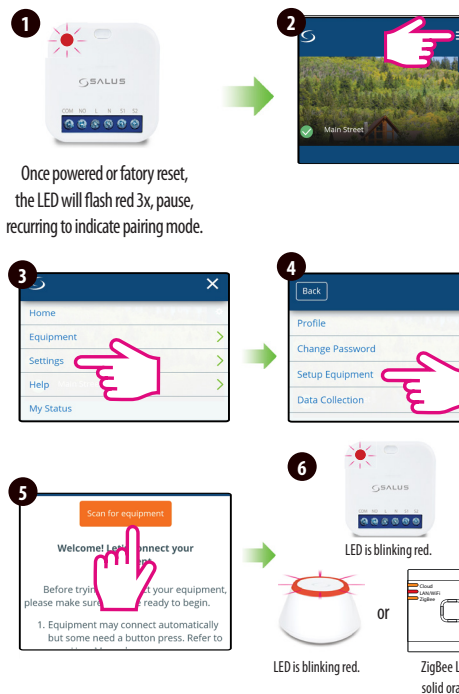
This product complies with the essential requirements and other relevant provisions of Directives GPSR (EU) 2023/988, RED (EU) 2025/138, RoHS (EU) 2017/2102 amending (EU) 2015/853... The full text of the EU Declaration of Conformity is available at the following internet address: www.saluslegal.com.

2405-2480MHz, <14dBm

Safety Information

Use in accordance with the regulations. Indoor use only. Keep your device completely dry. Disconnect your device before cleaning it with a dry cloth. This accessory must be fitted by a competent person, and installation must comply with the guidance, standards and regulations applicable to the city, country or state where the product is installed. Failure to comply with the relevant standards could lead to prosecution.

Pairing



LED Indication

Description	LED
Joining Network automatically	RED LED pulsing
Joining Network triggered by button press	RED+GREEN LED turn on for 1s, then RED LED pulsing
Device Relay ON with Network	GREEN LED ON
Device Relay OFF with Network	RED LED ON
Device Relay OFF without Network	RED LED pulsing
Device Relay ON without Network	RED + GREEN LED pulsing
Identify	GREEN LED flashing for up to 10 minutes