

SALUS® CONTROLS

RT310, RT310TX, RT310RF



Quick Guide



Introduction

RT310 / RT310TX / RT310RF is a digital room thermostat used to control room temperature. Device launching heating system by shorting terminal blocks, simultaneously informing the action and showing this information on the LCD display. Before use please read this manual carefully. Use only AA 1.5 V alkaline batteries in the thermostat. Place the batteries into the battery slot located under the cover. Do not use rechargeable batteries.

Product compliance

This product complies with the essential requirements and other relevant provisions of the following EU Directives: EMC 2014/30/EU, LVD 2014/35/EU, RED 2014/53/EU and RoHS 2011/65/EU. Full text of the EU Declaration of Conformity is available on www.saluslegal.com

(P) 868.0-868.6MHz; <13dBm

Safety Information

Use in accordance to national and EU regulations. Use the device as intended, keeping it in dry condition. Product for indoor use only. Installation must be carried out by a qualified person in accordance to national and EU regulations.

Technical specification

	RT310	RT310TX
Thermostat supply	2 x AA alkaline batteries	2 x AA alkaline batteries
Receiver supply	-	230 V AC
Thermostat rating max	3 (1) A	-
Receiver rating max	-	16 (5) A
Outputs	Voltage free NO / COM / NC terminals	Voltage free NO / COM terminals
Temperature range	5 - 35°C	5 - 35°C

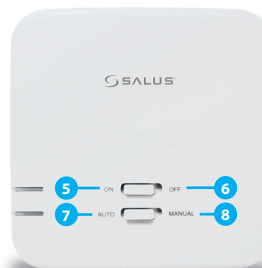
Button functions

RT310 / RT310TX Thermostat



1. Turn on the LCD backlight
2. Turn On/Off the Frost Mode
3. Increase button
4. Decrease button

RXRT510 Receiver



5. When in Manual Mode, ON will turn the boiler on.
6. When in Manual Mode, OFF will turn the boiler off.
7. Receiver operates in automatic mode according to the thermostat
8. Receiver output is controlled by the On/Off slide switch.

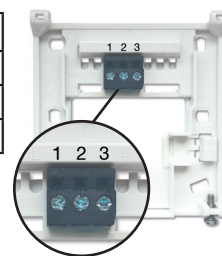
LCD Icon description



1. Heating Mode ON
2. Frost Protection Mode ON
3. RF signal indicator (only in RT310RF)
4. Low battery status
5. Temperature unit
6. Room / setpoint temperature

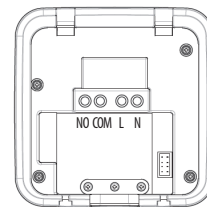
RT310 Terminals description

Terminal	Description
1 - COM	Common Terminal
2 - NC	Switched Live OFF
3 - NO	Switched Live ON



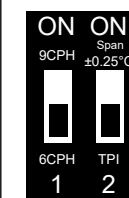
RXRT510 Receiver terminals description

Terminal	Description
NO	Switch Terminal
COM	Common Switch Terminal
L, N	Supply (230 V AC)



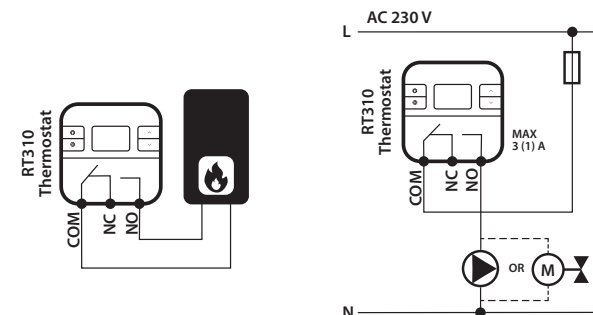
DIP Switch Settings

The DIP Switches can be found on the rear of your thermostat.



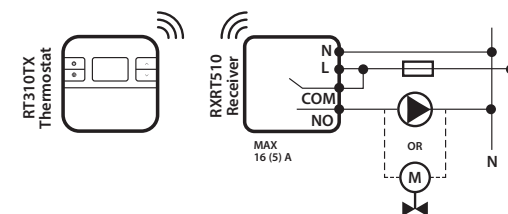
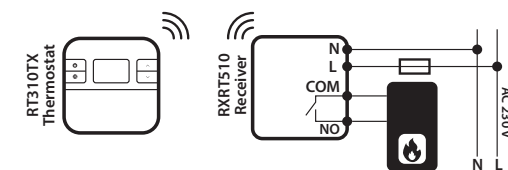
Control feature	TPI	Span
Operation	When TPI is selected on DIP switch № 2, the DIP switch № 1 is functional. You can choose the Cycles Per Hour between a lower comfort level (6CPH) and a higher comfort level (9CPH).	When Span is selected on DIP switch № 2, the DIP switch № 1 is not functional. The temperature accuracy of your thermostat is set to $\pm 0.25^\circ\text{C}$.

RT310 Wiring diagram

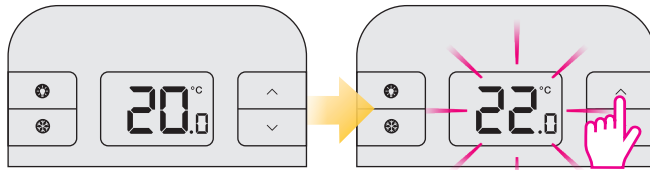


RT310RF Wiring diagram

Note: If you are using the RT310RF pack, the pairing between the thermostat and the receiver is already done.

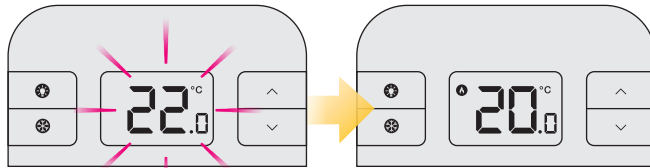


Change the Setpoint temperature



Actual room temperature.

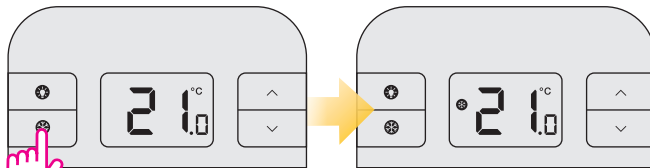
Press \wedge or \vee to set the temperature.



2 seconds timeout.

Actual room temperature.

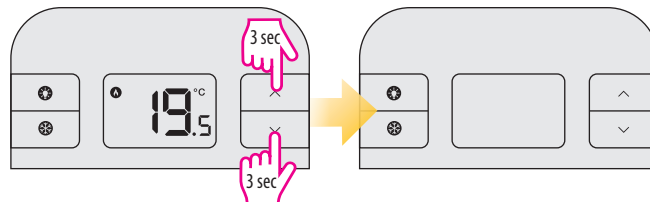
Frost Protection



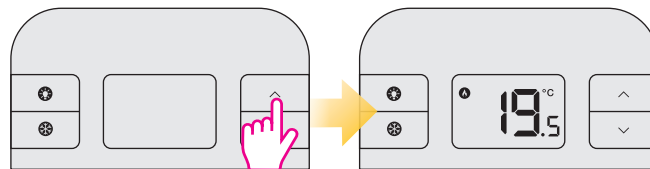
Press \odot button to turn On/Off frost protection.

i The Frostpoint temperature can be reviewed by pressing the UP button once, but can only be changed in Installer Mode.

Sleep Mode



i When Sleep Mode is active all the thermostat functions will be paused.



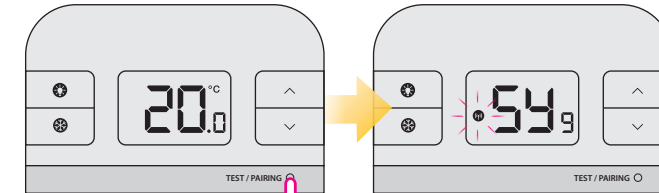
Press any button to stop the Sleep Mode.

Pairing the RT310TX with the Receiver

! **Note:** If you are using the RT310RF pack, the pairing between the thermostat and the receiver is already done.

i If you bought the RT310TX and RXRT510 separately or if you want to re-pair thermostat with the receiver, make sure that the device is disconnected from the power supply and the switches on the receiver have been set to AUTO and ON. Then connect the receiver to the power supply and wait for the red LED to light steadily. Then switch to the OFF position and again to ON position quickly. The red flashing LED will confirm entering the pairing mode.

Begin the pairing process

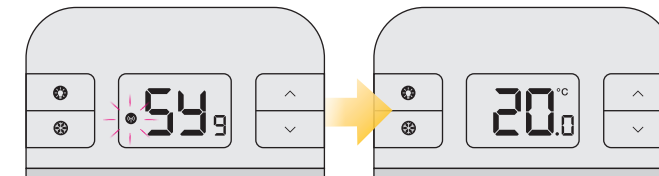


Press and hold TEST / PAIRING button for 3 seconds.

3 sec

Pairing process can take up to 9 minutes.

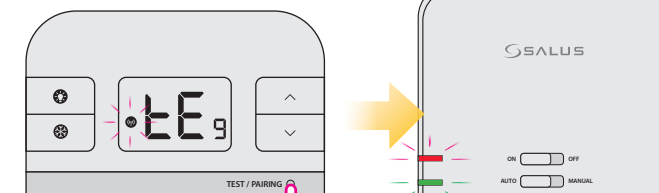
End the pairing process



Once devices are successfully paired, LED on the receiver will go solid red. Press and hold TEST / PAIRING button for 3 seconds to end the pairing process.

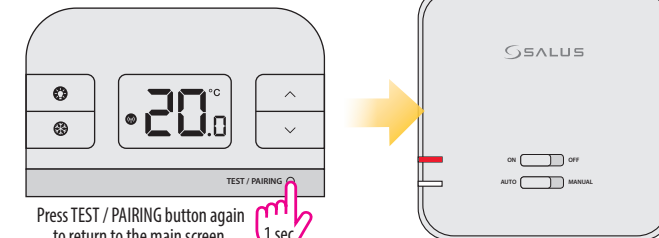
3 sec

Test the pairing process



Press TEST / PAIRING button to check the connection with the receiver.

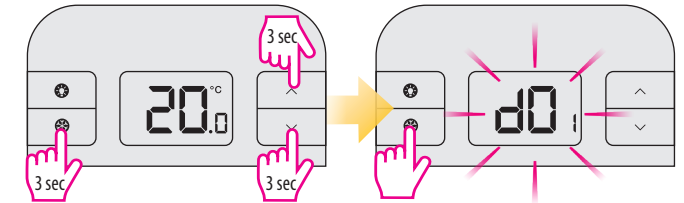
1 sec



Press TEST / PAIRING button again to return to the main screen.

1 sec

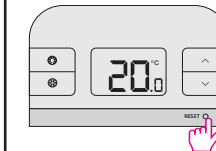
Installer Mode



Press three buttons at the same time for 3 seconds.

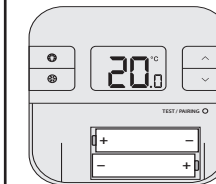
dxx	Function	Parameter	Default value
d01	Temperature display increments	0.1°C or 0.5°C	0.5°C
d02	Temperature offset	+/- 3.0°C	0.0°C
d03	Frost Protection setpoint temperature	5.0°C - 17.0°C	5.0°C

Reset of the RT310 thermostat



Press the RESET button once. You can use a paper clip. Your thermostat will be reset and will start up automatically.

Reset of the RT310TX thermostat



Remove the batteries without pressing any button. Wait 2 minutes and insert the batteries again. Your device will be restarted.

i When you want to change the batteries your device will use the internal memory to backup your settings. You have 30 seconds to change the batteries before losing your settings.

NOTE:

If you do not notice the "low battery" symbol displayed on the screen in time, it will shut down. In this case, after removing the old batteries, it is necessary to wait 5 minutes before inserting the new batteries. Otherwise, it is possible that a condenser will remain partially discharged and it can prevent the thermostat from restarting.

PRODUCER:

SALUS Controls Plc Units 8-10
Northfield Business Park Forge Way,
Parkgate, Rotherham S60 1SD, United
Kingdom
www.saluscontrols.com

Issue Date: June 2019



SALUS Controls is a member of the Computime Group.

Maintaining a policy of continuous product development SALUS Controls plc reserve the right to change specification, design and materials of products listed in this brochure without prior notice.

