



Quick Guide

Technical Support

DE / NL / FR:  
E: support@salus-controls.de  
T: +49 (61) 08 8258515  
UK  
E: tech@salus-tech.com  
T: +44 (0) 1226 323961

Head Office:

SALUS Controls plc  
SALUS House  
Dodworth Business Park South,  
Whinby Road, Dodworth,  
Barnsley S75 3SP, UK.  
T: +44 (0) 1226 323961  
E: sales@salus-tech.com



Introduction

A SALUS FC600 is a device suitable for controlling your fan coil unit in both 2 pipe and 4 pipe systems and for managing the temperature in your home and/or working environment. For an internet connection (Online Mode), this product must be used with the SALUS Universal Gateway (UG600/UGE600) and the SALUS Smart Home App. You can also use the SALUS FC600 without an internet connection (Offline Mode). Go to www.salus-smarhome.com or www.salus-manuals.com for the full PDF version of the manual.

Product Compliance

This product complies with the essential requirements and other relevant provisions of Directives 2014/30/EU, 2014/35/EU, 2014/53/EU and 2011/65/EU. The full text of the EU Declaration of Conformity is available at the following internet address: www.saluslegal.com.

Safety Information

Use in accordance with the regulations. Indoor use only. Keep your device completely dry. Disconnect your device before cleaning it with a dry cloth.



Introduction

A SALUS FC600 is a device suitable for controlling your fan coil unit in both 2 pipe and 4 pipe systems and for managing the temperature in your home and/or working environment. For an internet connection (Online Mode), this product must be used with the SALUS Universal Gateway (UG600/UGE600) and the SALUS Smart Home App. You can also use the SALUS FC600 without an internet connection (Offline Mode). Go to www.salus-smarhome.com or www.salus-manuals.com for the full PDF version of the manual.

Produktkonformität

Das Produkt den wesentlichen Anforderungen der folgenden EG-Direktiven entspricht: 2014/30/EU, 2014/35/EU, 2014/53/EU und 2011/65/EU. Der vollständige Text der EU-Konformitätserklärung ist über die folgende Internetadresse verfügbar: www.saluslegal.com.

Sicherheitshinweis

Nur mit gängigen Verordnungen verwenden. Nur im Innenbereich. Halten Sie Ihr Gerät trocken. Trennen Sie ihr Gerät ehe Sie es mit einem trockenen Tuch reinigen.



Introduction

A SALUS FC600 is a device suitable for controlling your fan coil unit in both 2 pipe and 4 pipe systems and for managing the temperature in your home and/or working environment. For an internet connection (Online Mode), this product must be used with the SALUS Universal Gateway (UG600/UGE600) and the SALUS Smart Home App. You can also use the SALUS FC600 without an internet connection (Offline Mode). Go to www.salus-smarhome.com or www.salus-manuals.com for the full PDF version of the manual.

Product aansprakelijkheid

Dit product voldoet aan de vereiste voorschriften en andere relevante richtlijnen. 2014/30/EU, 2014/35/EU, 2014/53/EU en 2011/65/EU. De volledige tekst van de EU verklaring van conformiteit is beschikbaar op het volgende internet adres: www.saluslegal.com

Veiligheidsinformatie

Gebruik alleen volgens de voorschriften. Uitsluitend binnenshuis te gebruiken. Houd uw apparaat geheel droog. Schakel het apparaat uit voordat u het reinigt met een droge doek.



Introduction

A SALUS FC600 is a device suitable for controlling your fan coil unit in both 2 pipe and 4 pipe systems and for managing the temperature in your home and/or working environment. For an internet connection (Online Mode), this product must be used with the SALUS Universal Gateway (UG600/UGE600) and the SALUS Smart Home App. You can also use the SALUS FC600 without an internet connection (Offline Mode). Go to www.salus-smarhome.com or www.salus-manuals.com for the full PDF version of the manual.

Conformité produit

Ce produit est conforme avec les exigences essentielles et autres dispositions des directives 2014/30/EU, 2014/35/EU, 2014/53/EU et 2011/65/EU. Le texte complet de la déclaration de conformité EU est disponible à l'adresse internet suivante: www.saluslegal.com.

Informations relatives à la sécurité

A utiliser en respectant la réglementation. Usage intérieur uniquement. Conservez votre appareil à l'abri de l'humidité. Déconnectez et mettez l'appareil hors tension avant de le nettoyer avec un chiffon sec.



Installation

Terminal Name	Function
L	230VAC Live input
N	230VAC Neutral input
V1	4 pipe: for Hot Water valve output 2 pipe: for Heating or Cooling
V2	4 pipe: for Chilled water valve output 2 pipe: no need to wire the V2 output
F1	• Fan Speed control (Low level)
F2	• Fan Speed control (Medium level)
F3	• Fan Speed control (High level)
S1	Heat/Cool changeover or pipe sensor
S2	Occupancy sensor or external sensor
COM	Common Terminal



Installation

Terminal Name	Function
L	230VAC Live input
N	230VAC Neutral input
V1	4 pipe: for Hot Water valve output 2 pipe: for Heating or Cooling
V2	4 pipe: for Chilled water valve output 2 pipe: no need to wire the V2 output
F1	• Fan Speed control (Low level)
F2	• Fan Speed control (Medium level)
F3	• Fan Speed control (High level)
S1	Heat/Cool changeover or pipe sensor
S2	Occupancy sensor or external sensor
COM	Common Terminal



Installation

Terminal Name	Function
L	230VAC Live input
N	230VAC Neutral input
V1	4 pipe: for Hot Water valve output 2 pipe: for Heating or Cooling
V2	4 pipe: for Chilled water valve output 2 pipe: no need to wire the V2 output
F1	• Fan Speed control (Low level)
F2	• Fan Speed control (Medium level)
F3	• Fan Speed control (High level)
S1	Heat/Cool changeover or pipe sensor
S2	Occupancy sensor or external sensor
COM	Common Terminal



Installation

Terminal Name	Function
L	230VAC Live input
N	230VAC Neutral input
V1	4 pipe: for Hot Water valve output 2 pipe: for Heating or Cooling
V2	4 pipe: for Chilled water valve output 2 pipe: no need to wire the V2 output
F1	• Fan Speed control (Low level)
F2	• Fan Speed control (Medium level)
F3	• Fan Speed control (High level)
S1	Heat/Cool changeover or pipe sensor
S2	Occupancy sensor or external sensor
COM	Common Terminal



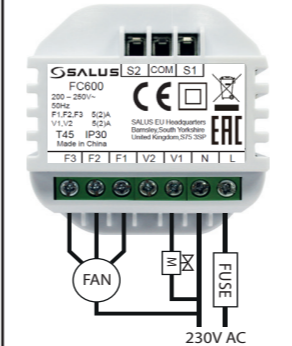
S1, S2 have no connection to external sensors or switches

S1, S2 have no connection to external sensors or switches

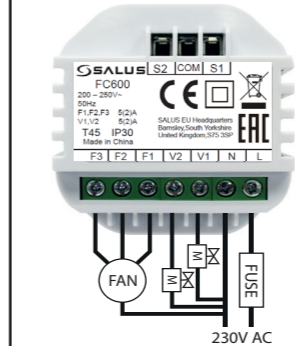
S1, S2 have no connection to external sensors or switches

S1, S2 have no connection to external sensors or switches

UK: 2 pipe DE: 2 pipe FR: 2 pipe NL: 2 pipe



UK: 4 pipe DE: 4 pipe FR: 4 pipe NL: 4 pipe

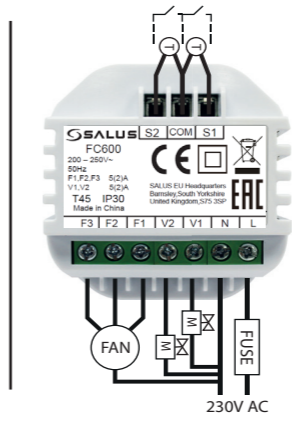
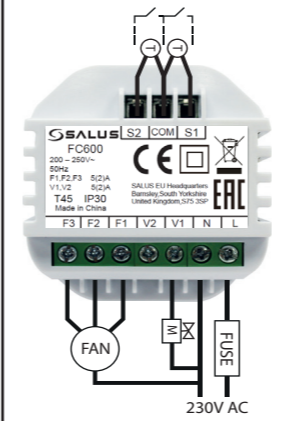


S1, S2 are connected to external sensors or switches

S1, S2 are connected to external sensors or switches

S1, S2 are connected to external sensors or switches

S1, S2 are connected to external sensors or switches



2 pipe V1: Heating or Cooling Valve V2: Not Available

2 pipe V1: Heating or Cooling Valve V2: Not Available

2 pipe V1: Heating or Cooling Valve V2: Not Available

2 pipe V1: Heating or Cooling Valve V2: Not Available

4 pipe V1: Heating Valve V2: Cooling Valve

4 pipe V1: Heating Valve V2: Cooling Valve

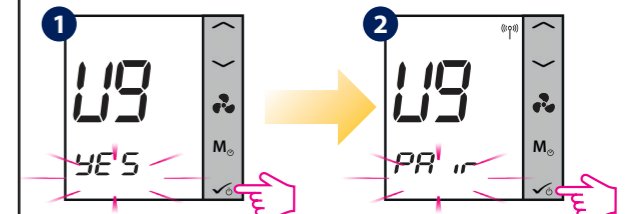
4 pipe V1: Heating Valve V2: Cooling Valve

4 pipe V1: Heating Valve V2: Cooling Valve

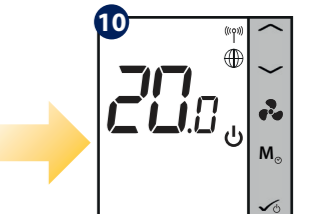
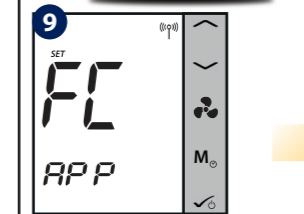
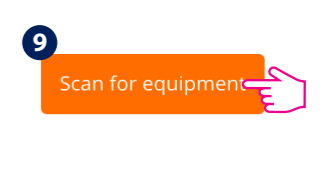
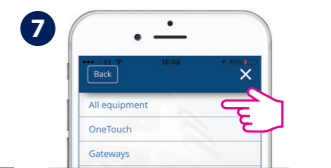
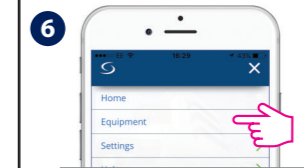


Installation Installation Installation Installation

- 1. UG600 / UGE600 and Internet connection
- 1. UG600 / UGE600 and Internet connection
- 1. UG600 / UGE600 and Internet connection
- 1. UG600 / UGE600 and Internet connection

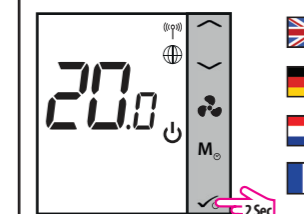


- Make sure that your Universal Gateway is installed and added to the APP. The LED must be blue.
- Make sure that your Universal Gateway is installed and added to the APP. The LED must be blue.
- Make sure that your Universal Gateway is installed and added to the APP. The LED must be blue.
- Make sure that your Universal Gateway is installed and added to the APP. The LED must be blue.



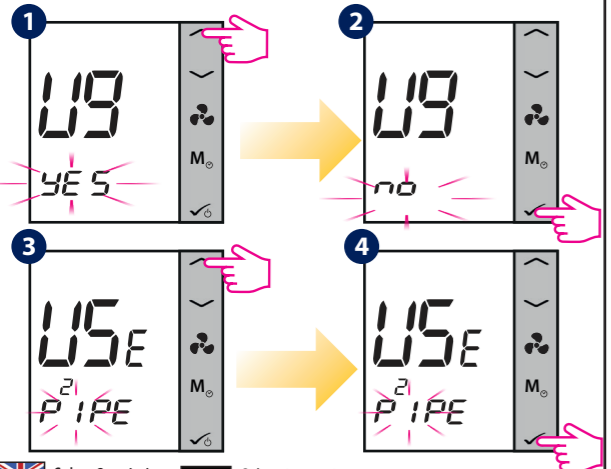
- Set up your device on the App
- Set up your device on the App
- Set up your device on the App
- Set up your device on the App

- Standby Mode
- Standby Mode
- Standby Mode
- Standby Mode



- If you want to turn the FC600 on press or switch it on via the App.
- If you want to turn the FC600 on press or switch it on via the App.
- If you want to turn the FC600 on press or switch it on via the App.
- If you want to turn the FC600 on press or switch it on via the App.

- 2. Without UG600 / UGE600 or Internet connection
- 2. Without UG600 / UGE600 or Internet connection
- 2. Without UG600 / UGE600 or Internet connection
- 2. Without UG600 / UGE600 or Internet connection



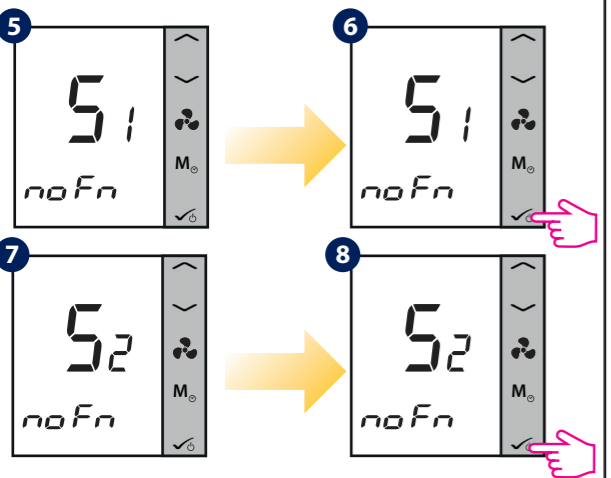
- Select 2 or 4 pipe.
- Select 2 or 4 pipe.
- Select 2 or 4 pipe.
- Select 2 or 4 pipe.

**Note:** If you are using Wiring Option 1 please follow steps 5-12 below. If you are using Wiring Option 2 then please select the relevant settings for S1 and S2 from the table below.

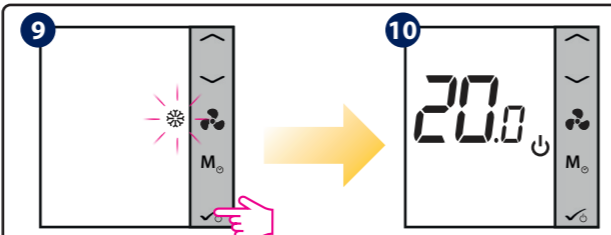
**Note:** If you are using Wiring Option 1 please follow steps 5-12 below. If you are using Wiring Option 2 then please select the relevant settings for S1 and S2 from the table below.

**Note:** If you are using Wiring Option 1 please follow steps 5-12 below. If you are using Wiring Option 2 then please select the relevant settings for S1 and S2 from the table below.

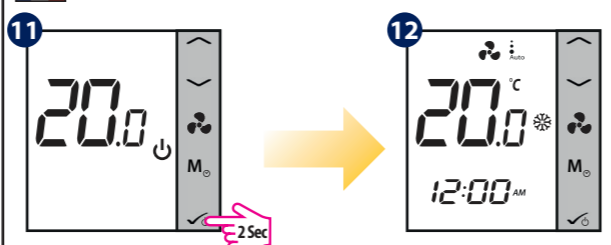
**Note:** If you are using Wiring Option 1 please follow steps 5-12 below. If you are using Wiring Option 2 then please select the relevant settings for S1 and S2 from the table below.



<b>S1 noFn</b>	<b>UK</b> No function <b>DE</b> No function <b>NL</b> No function <b>FR</b> No function
<b>S1 HCCO</b>	<b>UK</b> Heat/cool change over <b>DE</b> Heat/cool change over <b>NL</b> Heat/cool change over <b>FR</b> Heat/cool change over
<b>S1 Auto</b>	<b>UK</b> Auto heat cool changeover <b>DE</b> Auto heat cool changeover <b>NL</b> Auto heat cool changeover <b>FR</b> Auto heat cool changeover
<b>S2 nofn</b>	<b>UK</b> No function <b>DE</b> No function <b>NL</b> No function <b>FR</b> No function
<b>S2 door</b>	<b>UK</b> Occupancy sensor <b>DE</b> Occupancy sensor <b>NL</b> Occupancy sensor <b>FR</b> Occupancy sensor
<b>S2 sens</b>	<b>UK</b> External temperature sensor <b>DE</b> External temperature sensor <b>NL</b> External temperature sensor <b>FR</b> External temperature sensor



- Press UP/DOWN to select the mode. It can be or . Press to confirm your choice.
- Standby Mode.
- Standby Mode.
- Standby Mode.



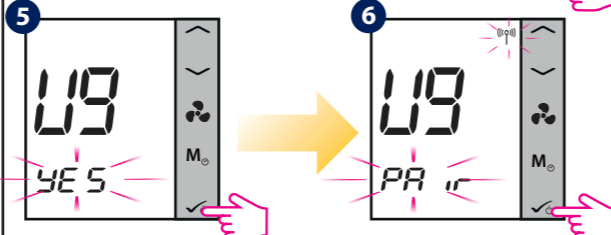
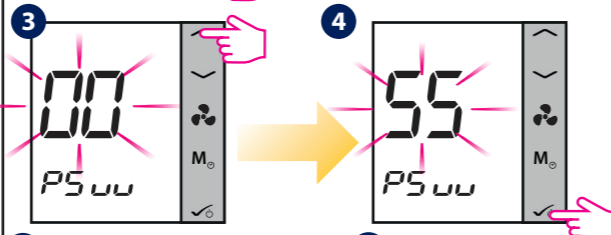
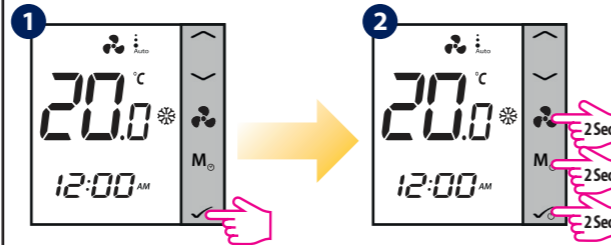
- Offline Mode to Online Mode**
- Offline Mode to Online Mode**
- Offline Mode to Online Mode**
- Offline Mode to Online Mode**

Use the App and the Universal Gateway to switch from Offline Mode to Online Mode.

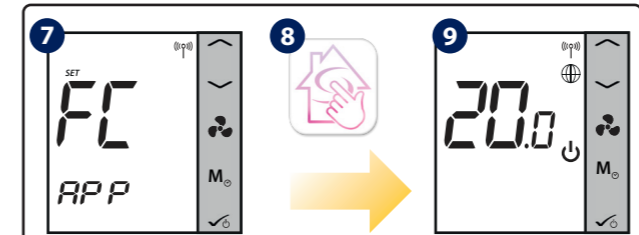
Use the App and the Universal Gateway to switch from Offline Mode to Online Mode.

Use the App and the Universal Gateway to switch from Offline Mode to Online Mode.

Use the App and the Universal Gateway to switch from Offline Mode to Online Mode.

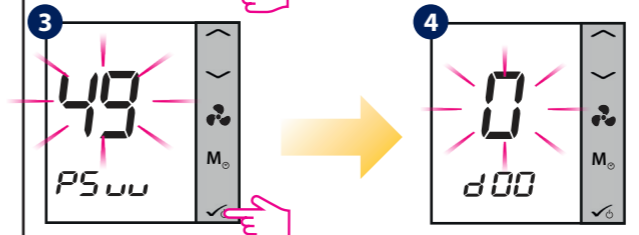
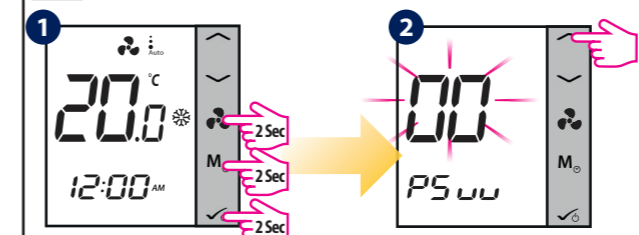


- Press from the App and follow the on screen instructions.
- Press from the App and follow the on screen instructions.
- Press from the App and follow the on screen instructions.
- Press from the App and follow the on screen instructions.



- Set up your device on the App. After that Standby Mode will be active.
- Set up your device on the App. After that Standby Mode will be active.
- Set up your device on the App. After that Standby Mode will be active.
- Set up your device on the App. After that Standby Mode will be active.

- Installer Mode (Offline only)**
- Installer Mode (Offline only)**
- Installer Mode (Offline only)**
- Installer Mode (Offline only)**



- Note:** For the parameters list, please consult the full manual at [www.salus-manuals.com](http://www.salus-manuals.com). They are also available on the App/Settings Menu (password is 49)
- Note:** For the parameters list, please consult the full manual at [www.salus-manuals.com](http://www.salus-manuals.com). They are also available on the App/Settings Menu (password is 49)
- Note:** For the parameters list, please consult the full manual at [www.salus-manuals.com](http://www.salus-manuals.com). They are also available on the App/Settings Menu (password is 49)
- Note:** For the parameters list, please consult the full manual at [www.salus-manuals.com](http://www.salus-manuals.com). They are also available on the App/Settings Menu (password is 49)

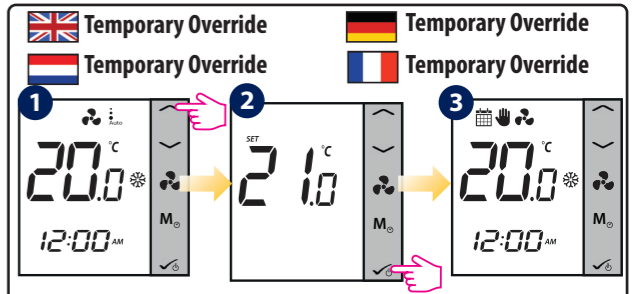
- Programming the FC600**
- Programming the FC600**
- Programming the FC600**
- Programming the FC600**

**Online Mode:** Create the schedules on the App  
**Offline Mode:** Enter in Installer Mode and change d00 from 0 to 1. After this press for 2 sec and create the desired programs (5-2, 7 days, 24h).

**Online Mode:** Create the schedules on the App  
**Offline Mode:** Enter in Installer Mode and change d00 from 0 to 1. After this press for 2 sec and create the desired programs (5-2, 7 days, 24h).

**Online Mode:** Create the schedules on the App  
**Offline Mode:** Enter in Installer Mode and change d00 from 0 to 1. After this press for 2 sec and create the desired programs (5-2, 7 days, 24h).

**Online Mode:** Create the schedules on the App  
**Offline Mode:** Enter in Installer Mode and change d00 from 0 to 1. After this press for 2 sec and create the desired programs (5-2, 7 days, 24h).



- Note:** The temporary override will be active until the next program starts. You can cancel the temporary Override by pressing .
- Note:** The temporary override will be active until the next program starts. You can cancel the temporary Override by pressing .
- Note:** The temporary override will be active until the next program starts. You can cancel the temporary Override by pressing .
- Note:** The temporary override will be active until the next program starts. You can cancel the temporary Override by pressing .

- Factory Reset**
- Factory Reset**
- Factory Reset**
- Factory Reset**

If you have made an error or need to change your system parameters, or want to return to the factory settings, please follow steps below. By performing this action you will lose all your settings.

If you have made an error or need to change your system parameters, or want to return to the factory settings, please follow steps below. By performing this action you will lose all your settings.

If you have made an error or need to change your system parameters, or want to return to the factory settings, please follow steps below. By performing this action you will lose all your settings.

If you have made an error or need to change your system parameters, or want to return to the factory settings, please follow steps below. By performing this action you will lose all your settings.

