

EL600F
SMART HOME
THERMOSTAT
QUICK GUIDE



Manufacturer: SALUS Controls plc
Units 8-10, Northfield Business Park, Forge Way,
Parkgate Rotherham, S60 1SD, United Kingdom

Importer: Salus Controls European Distribution sp.z o.o.
ul. Szamocka 8, piętro 6, 01 748 Warszawa, Poland

UK: tech@salus-tech.com
DE: info@salus-controls.de
PL: poland@saluscontrols.com
FR: technicalsupport@saluscontrols.fr
RO: tehnic@saluscontrols.ro
DK: Support@salus-controls.dk



www.saluscontrols.com

SALUS Controls is a member of the Computime Group. Maintaining a policy of continuous product development SALUS Controls plc reserve the right to change specification, design and materials of products listed in this brochure without prior notice.



Introduction

The EL600F Elypso smart home thermostat kit contains the EL600T thermostat plus various accessories. It can control a number of Salus wireless Smart Home devices (please see Compatible Devices section below). The EL600T can be used either locally, without an Internet connection (OFFLINE mode) or via the SALUS Premium Lite mobile app (ONLINE mode) but must be installed with the UGE600 or UG800 universal gateways (sold separately) in both cases.

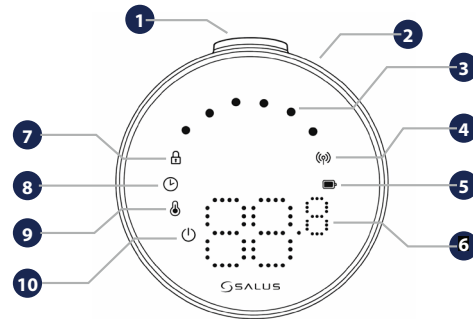
Product Compliance

This product complies with the essential requirements and other relevant provisions of Directives GPSR 2023/988, RED 2025/138/EU and RoHS 2017/2102 amending Annex II to Directive 2011/65/EU. The full text of the EU Declaration of Conformity is available at the following internet address: www.saluslegal.com.
(CE) 2405-2480MHz; <14dBm

Safety Information

Use in accordance to national and EU regulations. Use the device as intended, keeping it in dry condition. Product for indoor use only. Installation must be carried out by a qualified person in accordance to national and EU regulations. Disconnect your equipment before cleaning it with a dry cloth.

Icon description



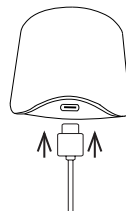
- | | |
|-----------------------------|----------------------------------|
| 1. Push button | 6. Temperature display |
| 2. Rotating dial | 7. Locked mode |
| 3. Heat/Cool Mode indicator | 8. Schedule settings |
| 4. RF status | 9. Mode setting/Optimum features |
| 5. Battery status | 10. Frost protection (Off mode) |

Package content

- | | |
|----------------------|--|
| 1) EL600T Thermostat | 6) USB cable - type C |
| 2) Charging dock | 7) 2 x M3x25mm |
| 3) Wall plate | 8) 2x M3 x 15mm |
| 4) Mini wall plate | 9) 2x wall plugs |
| 5) User quick guide | 10) Double-sided adhesive mounting plate |

Before you start

1 The EL600T Elypso Thermostat is partially charged, however, we recommend you to fully charge the battery before use. Connect the charger to USB Port type C which is at the back of the charging dock to charge the device.



Charging to full battery level may take up to 24h.

2 **Mounting:** To mount the thermostat the accessories included can be used (mounting screws and/or self adhesive tape).

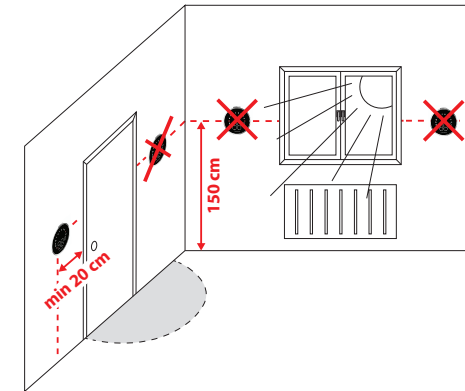
For wall plate: Remove the backplate and mount it on the wall by using the screws provided. After that the wall plate can be attached to it.

For mini wall plate: Use the screws provided and/or self adhesive plate in order to fix it on the wall. After following the procedure for any of the wall plates the thermostat can be attached. Due to the built-in magnet, thermostat can be safely fixed in place.

Please note:

The ideal position for thermostat mounting is about **1.5 m above floor level and far from heating and cooling sources.**

The thermostat should not be exposed to sunlight or any extreme conditions like for example draft.

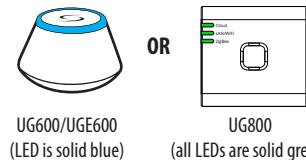


Thermostat working modes

The Elypso Thermostat can work in ONLINE or OFFLINE mode. At first you need to decide in which mode your thermostat will work.

Online mode

The Universal Gateway is **CONNECTED TO THE INTERNET.** You can configure and use all your devices with the Salus Premium Lite App.

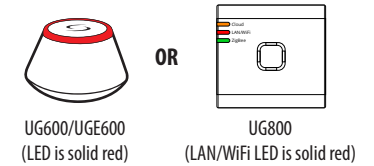


Download the Salus Premium Lite App on your iOS or Android device for remote access to your Salus equipment.

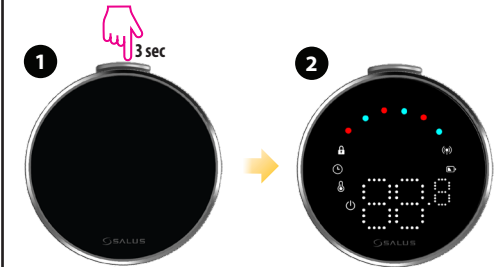


Offline mode

The Universal Gateway is **NOT CONNECTED TO THE INTERNET.** You can use it with TRV3RF and RX30RF locally (use Pairing menu to pair with them) without the Salus Premium Lite app.



Power up sequence



To power the Thermostat hold the top button for 3 seconds.

Display will show all icons.

Please note:

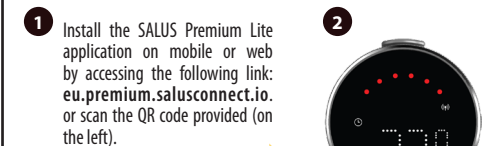
For an easier installation, please make sure you have already added other devices to your ZigBee network, such as **Underfloor Heating Control Box (KLO8RF)** or **Radiator heads (TRV's)**, etc.



Thermostat is powered up.

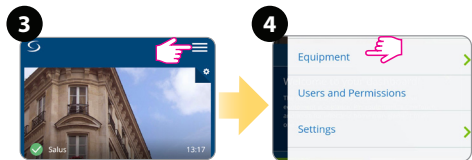
Installation in Online mode

In order to proceed with the installation in online mode, the below steps must be followed:

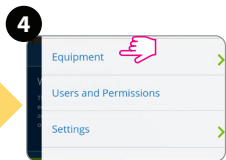


Make sure that the thermostat is powered up and RF signal indicator is blinking.

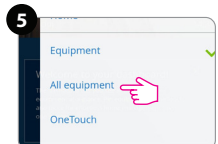




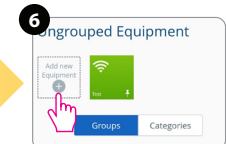
Press the three-line icon on the top right corner.



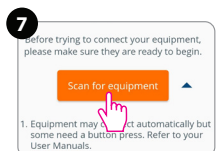
Select **Equipment**.



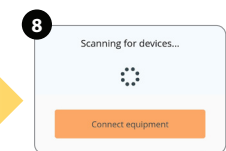
From the drop-down menu, select **All equipment**.



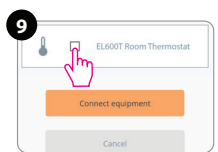
From the **Groups** tab, select **Add new equipment**.



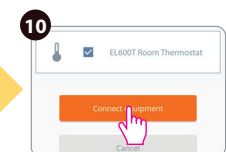
Scan for equipment.



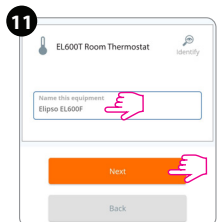
The app will scan for devices.



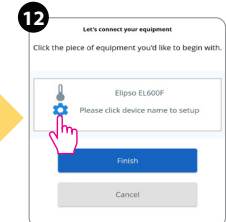
Tick the box to select **EL600T Room Thermostat**.



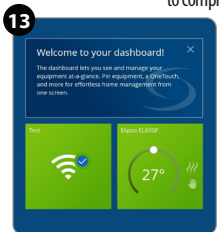
Connect equipment.



Name your equipment.

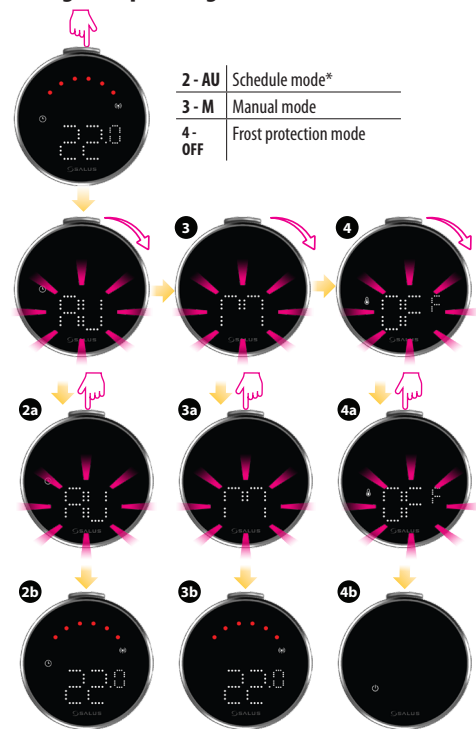


Click on the cog wheel icon to select the pairing device and follow the app screens to complete the installation.

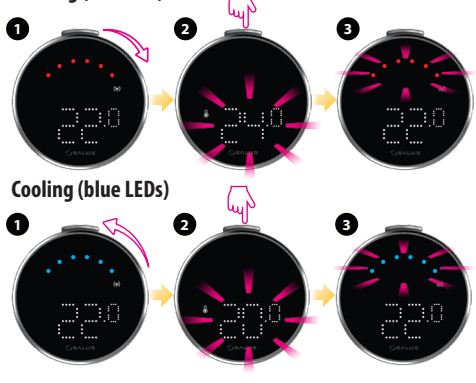


Thermostat has been added to dashboard.

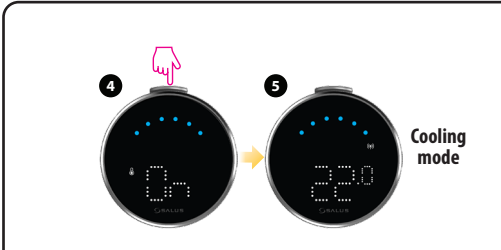
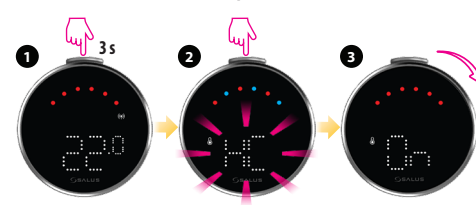
Change of operating mode



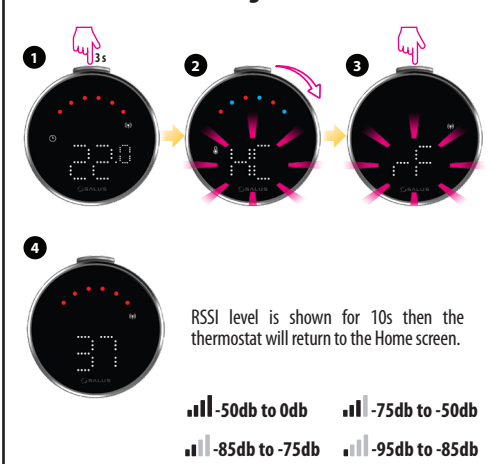
Change setpoint



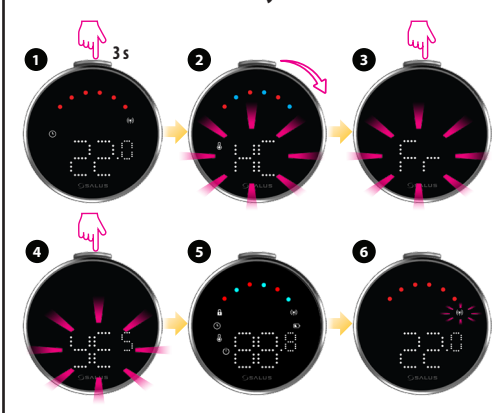
Advanced menu - Heat/Cool Selection



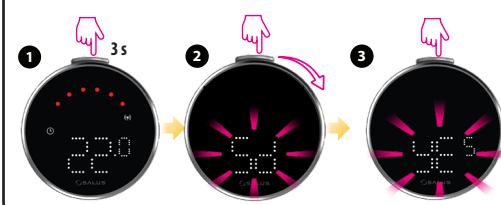
Advanced menu - RF signal



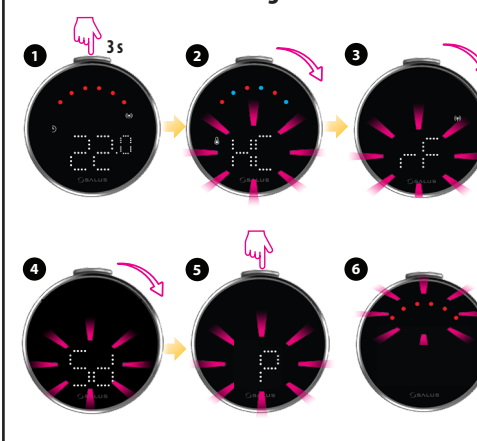
Advanced menu - Factory Reset



Advanced menu - Shutdown



Advanced menu - Pairing



Compatible devices

Can be paired only in the app	Can be paired in the app or via the local device pairing mode
TRV10RFM	TRV3RF
KL08RF	CB12RF (ZigBee 3.0 mode)
CB12RF (IT600 mode)	RX30RF
RX10RF	
SR600	
SPE600	

Error codes

Error codes	Description	Recommended action
E1	The thermostat has not been joined to the Zigbee network.	Activate the join network mode by pressing the main button and follow the instruction on the gateway or app to add the device to the Zigbee network.
E2	The thermostat has lost its temporary connection with the gateway	<ul style="list-style-type: none"> Recharge the thermostat. Ensure the gateway is powered on. Move the thermostat closer to the gateway. If there is no power at the gateway, the app will display grey tiles and show E2 status.
E4	The thermostat's temperature sensor is malfunctioning.	<ul style="list-style-type: none"> Ensure that the thermostat is operating within normal conditions: Temperature range: 0°C to 35°C Environment: Dry indoor conditions
E5	The thermostat battery level is critically low.	Recharge the thermostat using the charging dock for 24 hours.