



**SB600  
SMART BUTTON**  
QUICK GUIDE



**Introduction**

The Smart Button is used to trigger the "One touch" and "My Status" rules that you have created for your Salus Smart Home system. Normally "One touch" and "My Status" rules are triggered via the Salus Premium Lite app, however the Smart Button provides an additional Method. Also, you can create One Touch rules that include the Smart Button. This product must be used with the Universal Gateway (UG600/UGE600 or UG800) and the SALUS Premium Lite App.

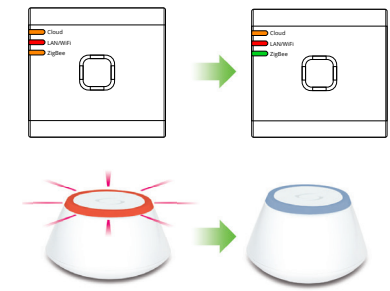
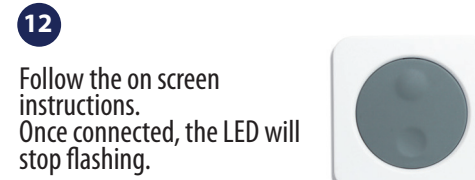
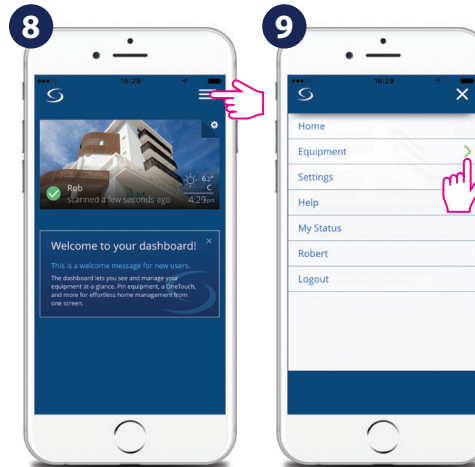
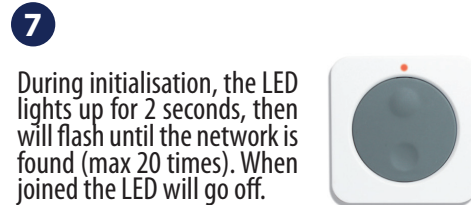
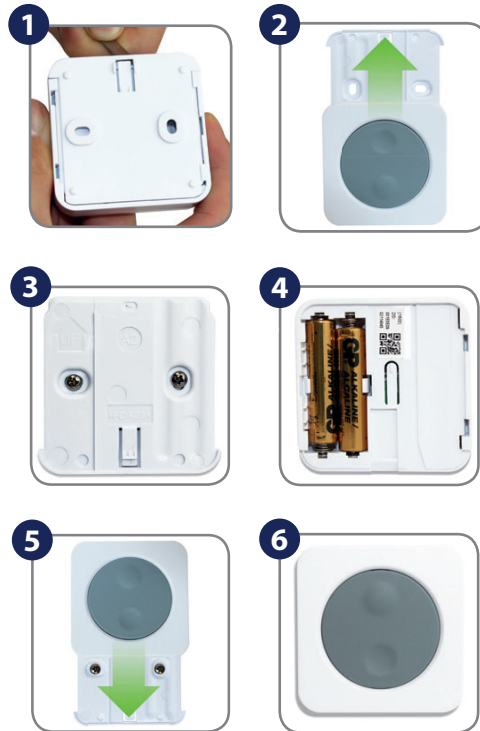
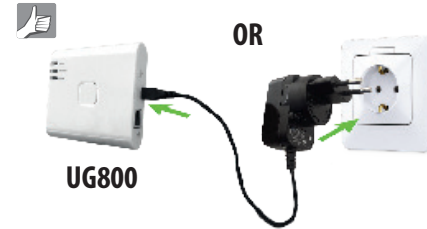
**Product Compliance**

This product complies with the essential requirements and other relevant provisions of Directives GPSR 2023/988/UE, EMC 2014/30/EU, LVD 2014/35/EU, RED 2025/138/EU and RoHS 2015/863/EU and 2017/2102/UE. The full text of the EU Declaration of Conformity is available at the following internet address: [www.saluslegal.com](http://www.saluslegal.com).

(cp) 2405-2480MHz, <14dBm

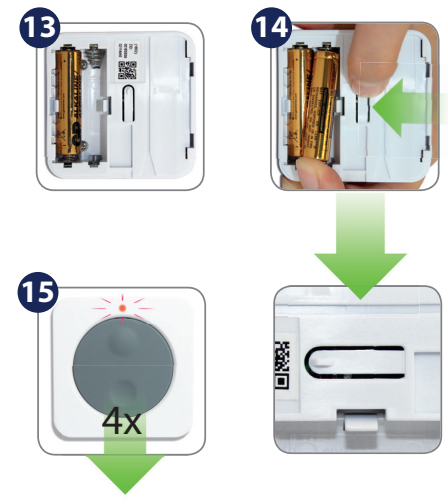
**Safety Information**

Use in accordance with the regulations. Designed to be used exclusively indoor. Keep your device completely dry. Disconnect your device before cleaning it with a dry towel.



**Factory Reset**

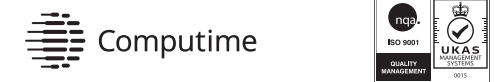
Remove one battery. Keep the reset button pressed when inserting back the battery.



**Manufacturer:**  
SALUS Controls plc  
Units 8-10, Northfield Business Park, Forge Way,  
Parkgate Rotherham, S60 1SD, United Kingdom

**Importer:**  
Salus Controls European Distribution sp.z o.o.  
ul. Szamocka 8, piętro 6., 01 748 Warszawa, Poland

UK: tech@salus-tech.com  
DE / NL: info@salus-controls.de  
PL: poland@saluscontrols.com  
FR: technicalsupport@saluscontrols.fr  
RO: tehnic@saluscontrols.ro  
DK: Support@salus-controls.dk



**www.saluscontrols.com**

SALUS Controls is part of the Computime Group. In accordance with our policy of continuous product development, SALUS Controls plc reserves the right to change the specifications, design and materials of the products listed in this brochure without prior notice.