



SALUS SOLAR SYSTEM

YOUR SOLUTION FOR A SUSTAINABLE FUTURE

At SALUS Controls, we have developed solar systems that provide seamless integration with your home or business. Our range of hybrid inverters and battery storage solutions is designed to help you harness solar energy efficiently and support better energy management.

1. On-Grid Installation:

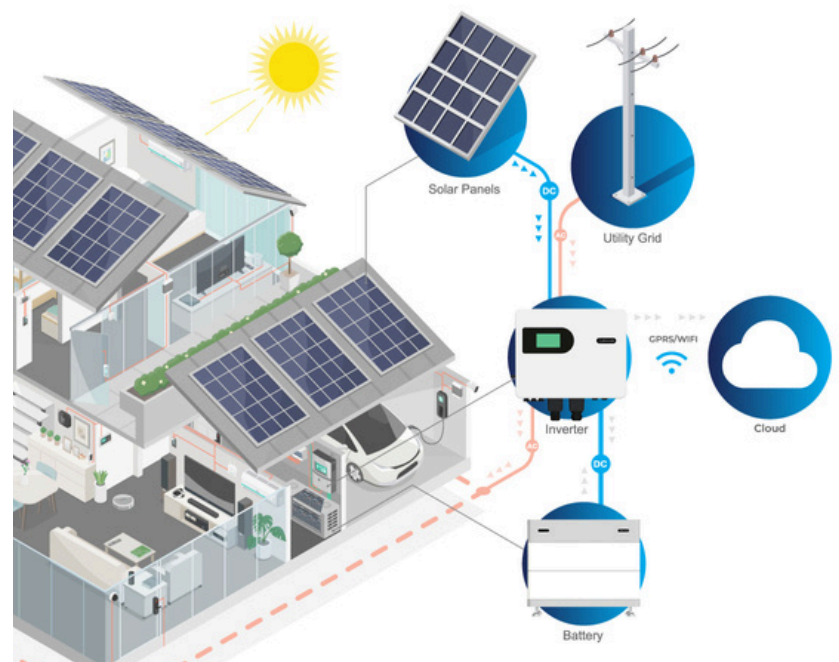
Solar panels power your home first, with excess energy sent to the grid. The grid provides backup when solar energy is insufficient.

2. Off-Grid Installation:

Ideal for remote areas, solar panels and batteries fully power your home. The backup function prioritizes battery use during low solar production.

3. Hybrid Installation:

Combines solar, grid, and battery power. Essential loads use solar and battery backup, while non-essential loads rely on the grid, ensuring power during outages.



Smart Control at Your Fingertips

Take charge of your energy usage with the SALUS Premium Lite App:

- **Live Monitoring:** Track solar production, battery storage, and grid consumption in real-time.
- **Energy Insights:** View daily, monthly, and yearly energy consumption and production graphs.
- **User-Friendly Interface:** Switch between different operating modes such as "Self Consumption," "Peak Shift," and "Battery Priority."
- **Installer & User Accounts:** Get dedicated access for users and installers, with the ability to export data and customize settings.

Why Choose SALUS Solar Solutions?

- **Reliable & Efficient:** Advanced MPPT tech maximizes solar power and ensures energy security.
- **Easy Installation:** IP-rated, user-friendly products for seamless integration and monitoring.
- **Energy Savings:** Cut grid reliance and lower bills with solar and battery storage.
- **Sustainable:** Support a greener future by reducing carbon emissions with renewable energy.

Single Phase Inverter (INV-WF-8000W-1P)

Empowering Your Home with Solar Energy

- **Hybrid Design:** Works with solar panels, batteries, and the electrical grid for uninterrupted power supply.
- **Dual MPPT Trackers:** Maximize energy production in varying solar conditions.
- **Seamless Grid Integration:** Easily switch between solar, battery, and grid power.
- **8kW Output:** Perfect for single-phase homes in Europe, supporting up to 12kW of solar panels.
- **Backup Functionality:** Keep critical appliances running even during outages.
- **Modern Design:** IP54 waterproof protection, large LCD display, and easy installation with a hanging rack.
- **WiFi Monitoring:** Compatible with the SALUS Premium Lite app for real-time system monitoring and management.



Three Phase Inverter (INV-WF-1000W-3P)

For Larger Residences and Businesses

- **High Performance:** 10kW per hour output with the ability to support up to 15kW of solar panels.
- **Hybrid Functionality:** Operates on both grid and off-grid modes.
- **WiFi Connectivity:** Track solar, battery, and grid data on the SALUS Premium Lite app.
- **Priority Load Management:** Automatically switch between solar power, batteries, and the grid to optimize energy use.
- **Energy Independence:** Ensure essential circuits are always powered during outages with the backup function.

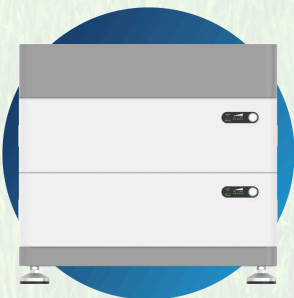


Storage Solutions: Backup Battery

Maximize Energy Storage and Efficiency

Single Phase Battery (BAT-INV-5000W-1P):

- **5kW Stackable:** Up to 6 units for flexible energy storage.
- **LED Indicators:** Visualize storage capacity with alarm notifications.
- **IP-rated Protection:** Water-resistant, suitable for outdoor use.



Three Phase Battery (BAT-INV-5000W-3P):

- **Stackable Design:** Supports up to 5 units, ideal for larger systems.
- **Battery Control Unit (BCU):** Easily manage and monitor storage.
- **LED & Alarms:** Visual and acoustic alarms for efficient monitoring.



iW10 Wi-Fi Adapter Module

The iW10 integrates with the SALUS Smart Home system, enabling solar system control via the SALUS Premium Lite App.

- **Smart Home Integration:** Connects the inverter to your smart ecosystem.
- **App Control:** Manage and monitor your system.
- **Performance Stats:** Access daily, monthly, and yearly data.
- **LED Indicators:** Status for cloud, Wi-Fi, and inverter communication.
- **Easy Setup:** Simple button interface for setup and resets.
- **RJ45 Port:** Connects to the inverter with a durable cable.
- **Energy Efficient:** Less than 15W power output.

