

SALUS[®] CONTROLS

4 in 1 Digital Thermostat RF

Models: VS20WRF and VS20BRF
VS10WRF and VS10BRF



INSTALLER / USER MANUAL

SALUS Controls plc
SALUS House
Dodworth Business Park South,
Whinby Road, Dodworth,
Barnsley S75 3SP, UK.

Sales: T: +44 (0) 1226 323961
E: sales@salus-tech.com

Technical: T: +44 (0) 1226 323961
E: tech@salus-tech.com

www.salus-controls.com



SALUS Controls is a member of the Computime Group

Maintaining a policy of continuous product development, SALUS Controls plc reserves the right to change specification, design and materials of products listed in this brochure without prior notice.

Issue Date: Feb 2017

Product Compliance

This product complies with the essential requirements and other relevant provisions of Directives 2014/30/EU, 2014/53/EU (2014/35/EU for VS10WRF/VS10BRF) and 2011/65/EU. The full text of the EU Declaration of Conformity is available at the following internet address: www.saluslegal.com.

Safety Information

Use in accordance with the regulations. Indoor use only. Keep your device completely dry. Disconnect your device before cleaning it with a dry cloth.

Always isolate the AC Mains supply before installing or working on any components that require 230 VAC 50Hz supply.

Introduction

Thank you for purchasing the 4 in 1 room thermostat. It must be used with the Universal Gateway UGE600 (purchased separately) when having an Internet connection or with the KL08RF for the underfloor system without Internet connection. The Universal Gateway allows communication with other devices in the SALUS Smart Home system. Other ZigBee devices include wiring centre, system receiver & TRV. You can use your system with the SALUS Smart Home App. Available on Google Play and App Store.



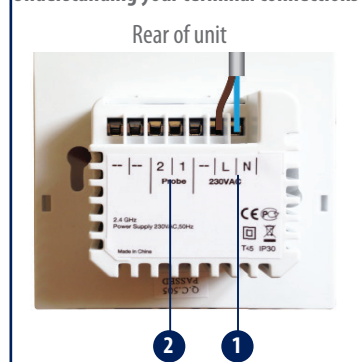
Installation – VS20WRF

Mount the back case of the thermostat on the wall. After that please insert the batteries and add the front case. Make sure to use 4AAA Alkaline batteries.



Installation – Terminal Connections VS10WRF

Understanding your terminal connections

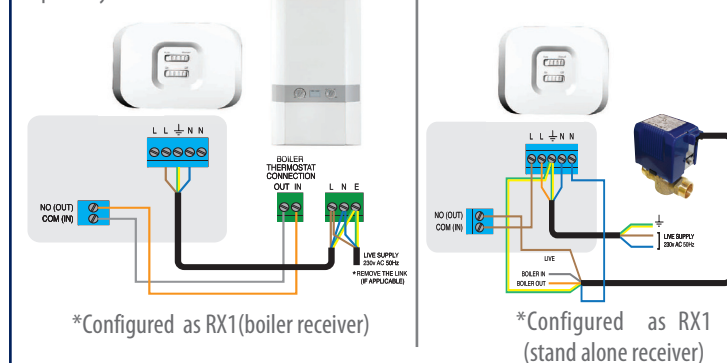


Power Terminals 230 VAC
Used for supplying power to the unit. 230V supply can be sourced from the wiring centre or any convenient source.

Sensor Terminals
Can be used for external AIR, Floor sensor when configured as thermostat. Can also be used for Cylinder thermostat when configured for HW.

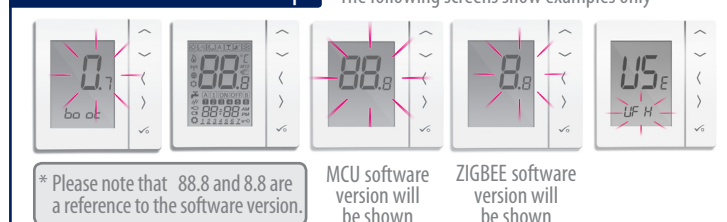
Installation – Receiver RX10RF (optional)

Note: Please install the RX10RF Receiver for your radiator system. This will ensure the communication between the thermostat and the boiler, giving you the possibility to switch the boiler on and off. The RX10RF receiver is optional and needs to be purchased separately.



Installation – First Power Up

The following screens show examples only



Please make sure that your Universal Gateway is installed. You can use it with both internet and non internet connection. The LED will be blue when connected to the internet and red when it's not connected.

With Internet



Without Internet



If you are installing an underfloor system without an Internet connection, you can use the coordinator from the KL08RF instead of the Universal Gateway.

Installation – Power Up your devices

Please follow the installation procedure for all equipment. After installation, your devices should look like this:



Pairing for radiator system with Internet connection



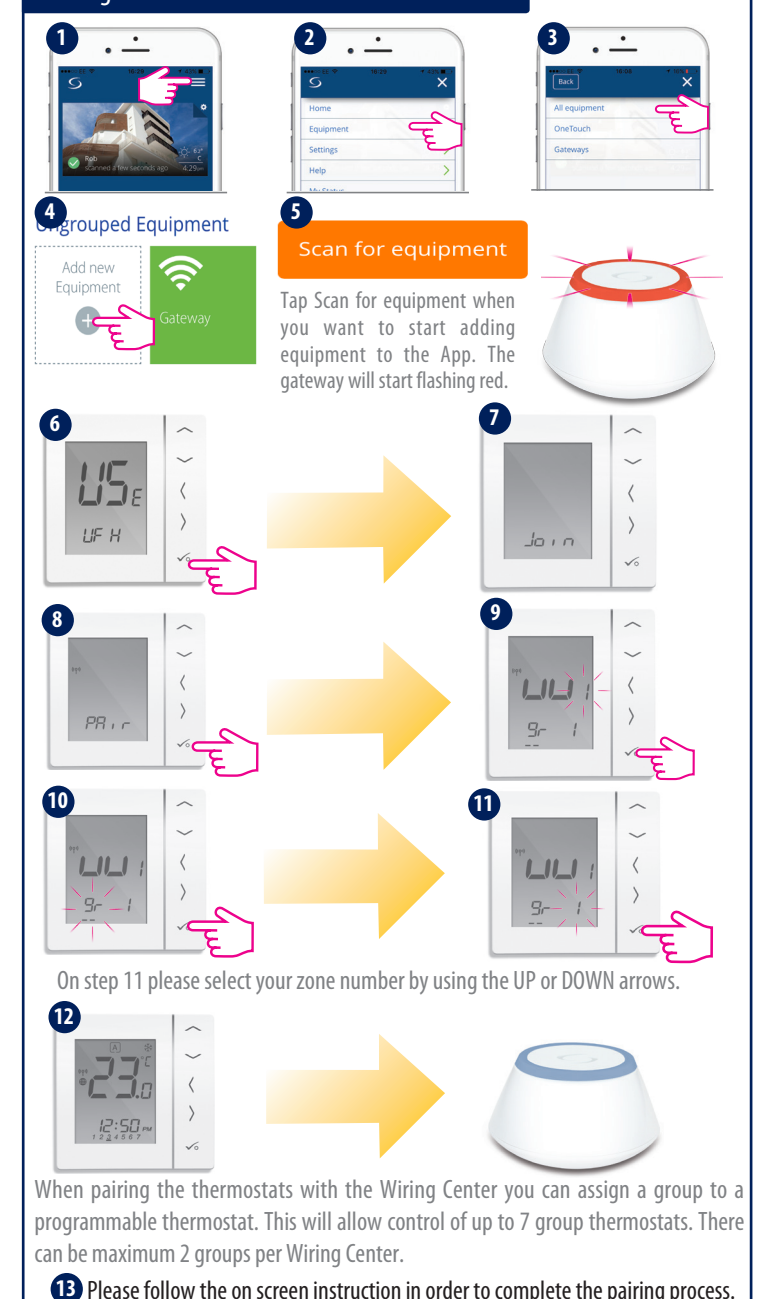
16 Associate the TRV(s) to the thermostat(s) (mandatory)

1. During the first time installation, by easily following the App instructions



Note: The TRV LED will flash orange until the association process is complete. Once this action has finished the LED will go off.

Pairing for underfloor with Internet connection



Pairing for radiator system without Internet connection

5 sec

Wait until the LED is solid red. Press the Open/Close button once. When the initialization process is complete, the LED will go off.

Press and hold the for 10 seconds until the TRV starts flashing red.

10 sec

1

2

3

4

5

6

7

8

9

Once all TRV's have paired press . If you use the maximum number of TRVs it will automatically take you to the Mainscreen.

The prefix number on the TRV will change as the TRV(s) pair.

5 sec

Pairing for underfloor system without Internet connection

5 sec

OR

5 sec

1

2

3

4

5

6

On step 6 please select your zone number by using the UP or DOWN arrows.

7

5 sec

OR

5 sec

When pairing the thermostats with the Wiring Center you can assign a group to a programmable thermostat. This will allow control of up to 7 group thermostats. There can be maximum 2 groups per Wiring Center.

Installation – System Parameters

If the pre-configured program is not suitable for your application, hold down the bottom three keys for a short time, until the display shows SEL PROG. Do these settings before adding the thermostat to the universal gateway.

Press all three buttons simultaneously

5 sec

5 sec

5 sec

Selecting unit type

Pr o9 Programmable Thermostat

d 19t Digital Thermostat

uu tr Hot water timer

Use or to select the type of unit. After selection has been made, press to confirm.

Setting the time (for systems without internet only)

3 sec

Set the program / schedule (for systems without internet only)

3 sec

1 2 3 4 5 6 7 5/2

1 2 3 4 5 6 7 7 Days

1 2 3 4 5 6 7 Individual

Use right and left to select the day of the programs.

Use right and left to select the day of the programs.

Installation – Check the paired devices

If you want to see what devices are connected to your Universal Gateway you can know exactly by using the Identify procedure.

Tap the tile from the Dashboard.

Tap the name of your device.

Tap the Identify button. Your device will start flashing

Tap the button again after identifying your device.

Factory reset

If you have made an error or need to change your system parameters please follow steps below. This should only be done by your installer.

Press all three buttons simultaneously

5 sec

5 sec

5 sec

Now you are ready to set up your system as desired.