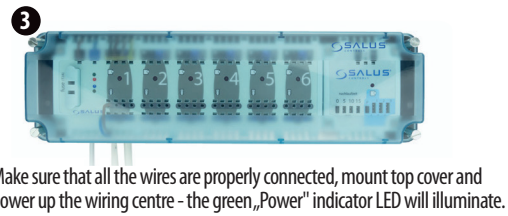
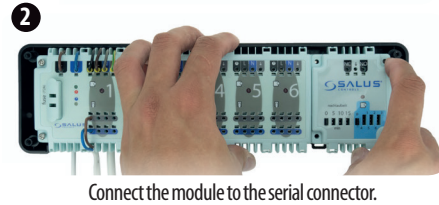
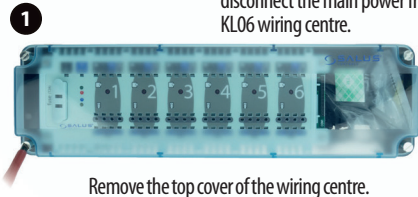


PL06
PUMP/BOILER CONTROL MODULE
FOR KL06 WIRING CENTRE
QUICK GUIDE

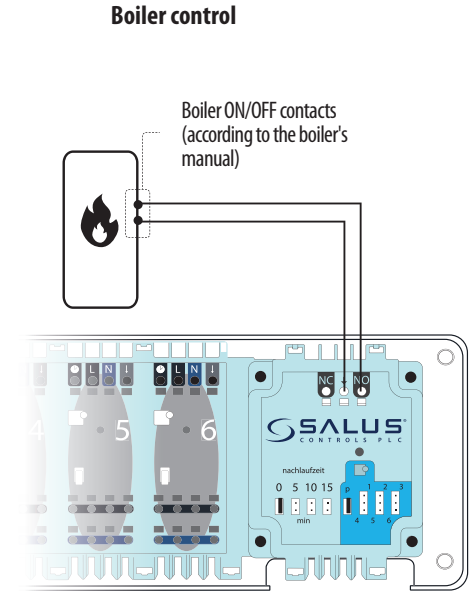
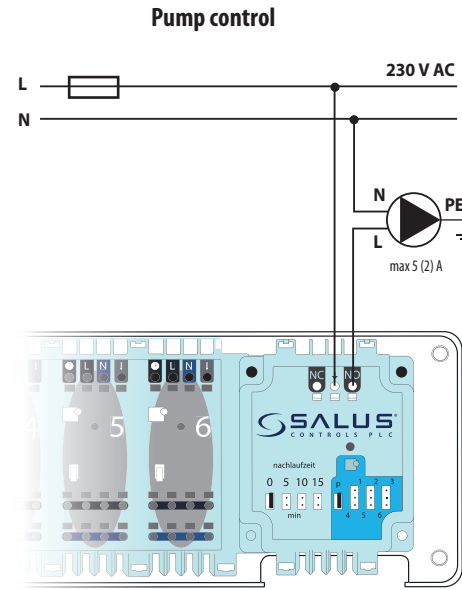


Installation

Note: Before connecting module, disconnect the main power from the KL06 wiring centre.



Wiring diagrams



Manufacturer: SALUS Controls plc
Units 8-10, Northfield Business Park, Forge Way,
Parkgate Rotherham, S60 1SD, United Kingdom

Importer: Salus Controls European Distribution sp.z o.o.
ul. Szamocka 8, piętro 6., 01 748 Warszawa, Poland

UK: tech@salus-tech.com
DE / NL: info@salus-controls.de
PL: poland@saluscontrols.com
FR: technicalsupport@saluscontrols.fr
RO: tehnic@saluscontrols.ro
DK: Support@salus-controls.dk



www.saluscontrols.com

SALUS Controls is a member of the Computime Group. Maintaining a policy of continuous product development SALUS Controls plc reserve the right to change specification, design and materials of products listed in this brochure without prior notice.



Introduction

The PL06 module extends the functionality of the KL06 wiring centre. The Module is used to control the pump (or boiler) using volt-free NC/COM/ NO contacts. When any of the thermostats connected to the KL06 230V call for heat, COM/NO contacts are closed. COM/NO contacts are open when thermostats connected the wiring centre stop calling for heat.

Product Compliance

This product complies with the essential requirements and other relevant provisions of Directives GPSR 2023/988/EU, EMC 2014/30/EU, LVD 2014/35/EU and RoHS 2015/863/EU and 2017/2102/EU. The full text of the EU Declaration of Conformity is available at the following internet address: www.saluslegal.com

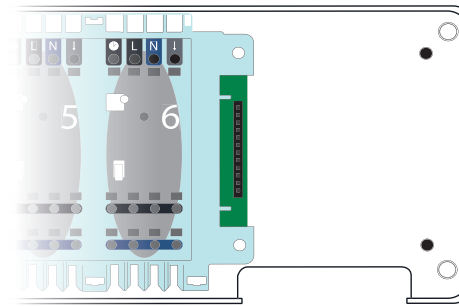
Safety Information

Use in accordance to national and EU regulations. Use the device as intended, keeping it in dry condition. Product for indoor use only. Installation must be carried out by a qualified person in accordance to national and EU regulations.

Before any of operation related to power supply (connecting wires, installing the device, etc.), make sure that devices is not connected to any power source. Installation must be carried out by a qualified person. Incorrect connection of the wires may cause damage to the wiring centre. The module can not be used in conditions of water vapor condensation neither exposed to water.

Serial connector for PL06 and PL07 modules

It provides communication between the KL06 wiring centre and the PL07 module. KL06 wiring centre + PL07 module increases functionality and additionally makes possible to control pump and boiler. PL07 module is powered from the wiring centre.

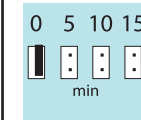


Technical information

Power supply	from the KL06 wiring centre
Max load	5 (2) A
Outputs	NO/COM/NC relays
Dimensions (mm)	60 x 80 x 20

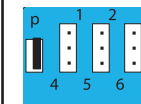
Jumpers description

Jumpers 0-15



These are used to set in minutes the delay (over-run) time. Default setting is "0". 0-15 values specify the time in minutes, e.g. when a jumper is set to "0" COM/NO output will turn off as soon as the thermostats stop calling for heat. If the jumper is set to the value "10", the module will turn off 10 minutes after the thermostats stop calling for heat.

Jumpers P, 1, 2, 3, 4, 5, 6



These are used to select the zone which turns on the module. Default setting is "P". P - all zones start the module.

1, 2, 3, 4, 5, 6 - select the specific zone which turns on the module.