

■ MANUAL ■

IT800WIFI  
**SMART THERMOSTAT**  
QUICK GUIDE

**Manufacturer:** SALUS Controls plc  
Units 8-10,  
Northfield Business Park,  
Forge Way, Parkgate  
Rotherham, S60 1SD, UK

**Importer:** Salus Controls  
European Distribution spz o.o.  
ul. Szamocka 8, piętro 6.  
01 748 Warszawa  
Poland

UK: tech@salus-tech.com  
DE / NL: info@salus-controls.de  
PL: poland@saluscontrols.com  
FR: technicalsupport@saluscontrols.fr  
RO: tehnic@saluscontrols.ro  
DK: Support@salus-controls.dk



www.saluscontrols.com

SALUS Controls is a member of the Computime Group  
Maintaining a policy of continuous product development SALUS  
Controls plc reserves the right to change specifications, design  
and materials of products listed in this brochure without prior notice.



03/2026

**Introduction**

The IT800 is a wireless ZigBee thermostat which controls the pre-paired WZ600 Zigbee Wi-Fi Receiver, which has a single channel relay. It is the coordinator of the network, allowing devices to join the network and managing them thereafter.

**Product Compliance**

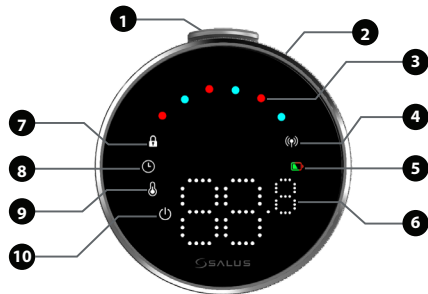
This product complies with the essential requirements and other relevant provisions of Directives GPSR 2023/988, EMC 2024/2749/EU, LVD 2014/35/EU, RED 2025/138/EU and 2017/2102 and 2015/863/EU amending Annex II of 2011/65/EU. The full text of the EU Declaration of Conformity is available at the following internet address: www.saluslegal.com.

(C) 2405-2480MHz; <20dBm (Wifi)

**Safety Information**

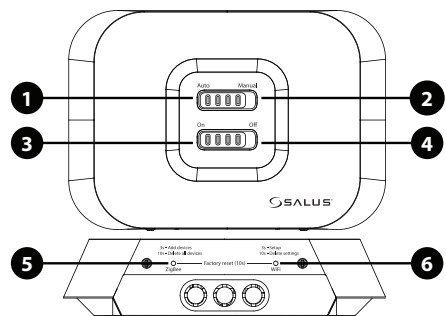
Use in accordance with the regulations. Indoor use only. Keep your device completely dry. Installation must be carried out by a qualified person in accordance to national and EU regulations.

**Thermostat icons and buttons**



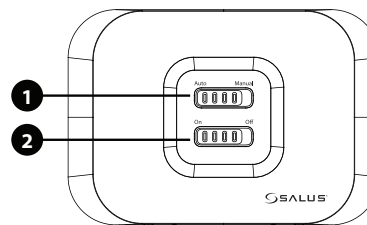
- |                             |                                  |
|-----------------------------|----------------------------------|
| 1. Push button              | 6. Temperature display           |
| 2. Rotating dial            | 7. Locked mode                   |
| 3. Heat/Cool Mode indicator | 8. Schedule settings             |
| 4. RF status                | 9. Mode setting/Optimum features |
| 5. Battery status           | 10. Frost protection (Off mode)  |

**Receiver buttons**



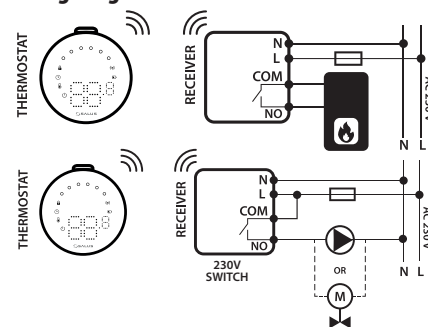
- |   |  |
|---|--|
| 1. <b>AUTO</b> - Receiver operates in auto mode according to the thermostat.  | 4. <b>OFF</b> - When in Manual Mode, OFF will turn the boiler off. |
| 2. <b>MANUAL</b> - Receiver output is controlled by the On/Off slide switch. (Manual ON can be disabled in the App) | 5. <b>ZIGBEE</b> - ZigBee network configuration                    |
| 3. <b>ON</b> - When in Manual Mode, ON will turn the boiler on.   | 6. <b>WIFI</b> - WiFi network configuration                        |
- Note:** Press and hold 10s the ZigBee and WiFi buttons to perform the Factory Reset.

**Receiver LED operation**

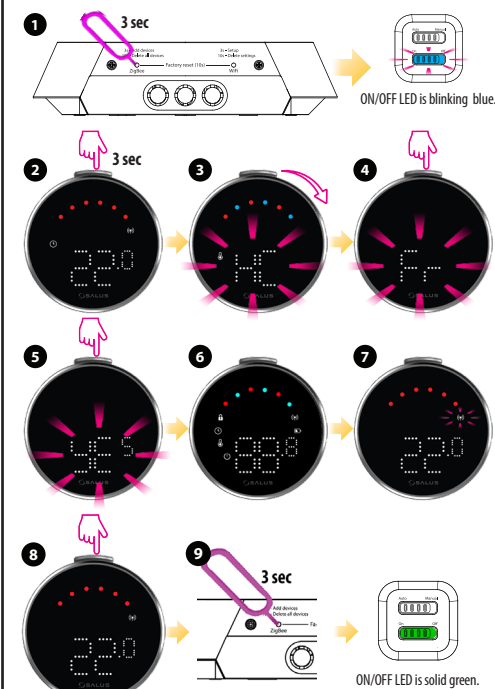


<b>1 AUTO - MANUAL</b>		LED is solid blue. Connected to internet
		LED is blinking blue. Define internet connection
		LED is solid green. Internet settings not defined
		LED is blinking green. OTA in progress
<b>2 ON - OFF</b>		LED is blinking red. Lost internet connection
		LED is solid blue. Cool demand
		LED is blinking blue. ZigBee network is open
		LED is solid green. No heat/cool demand
		LED is solid green. No devices linked with receiver
		LED is blinking green. ZigBee network is in identifying mode
<b>3 x</b>		LED is blinking green. When devices are found and added to the network
		LED is solid red. Heat demand
		LED is blinking red. During deleting all paired devices

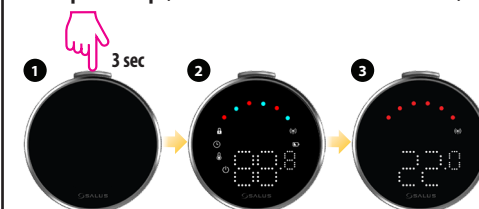
**Wiring diagrams**



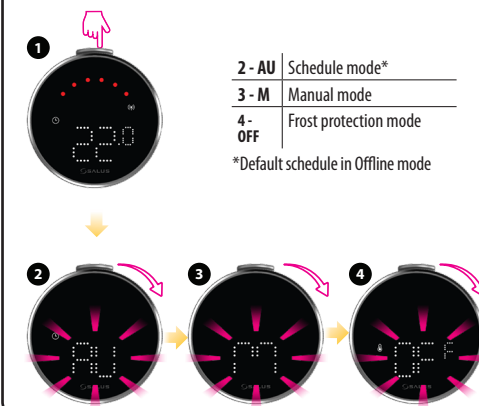
**Pairing process**

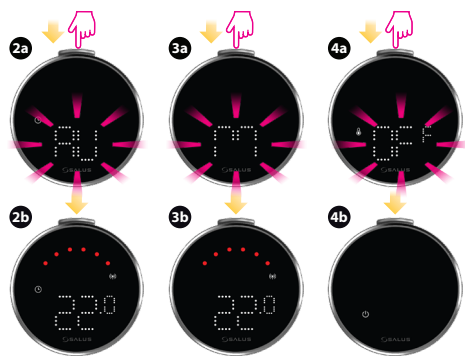


**First power up (the thermostat is in shutdown mode)**

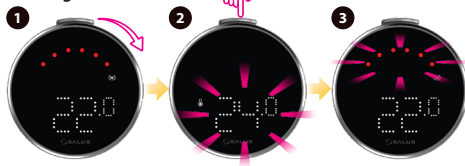


**Settings in Offline mode**





### Change setpoint Heating

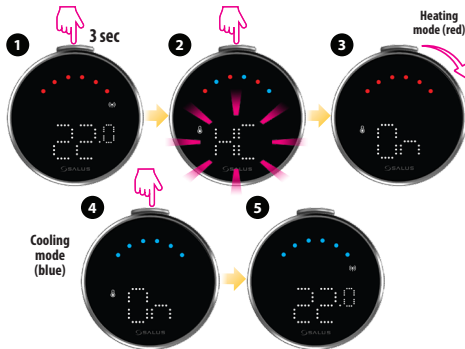


### Cooling

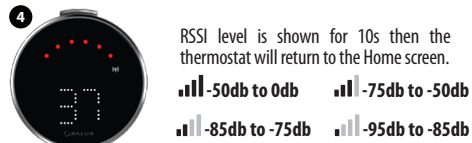


**Note:** The selection is validated either by short press the button or auto selection after 5 seconds.

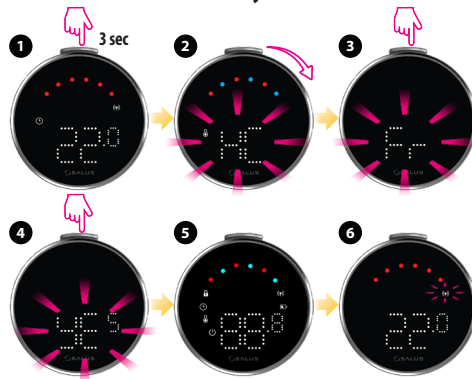
### Advanced menu - heat/cool modes



### Advanced menu - RF signal

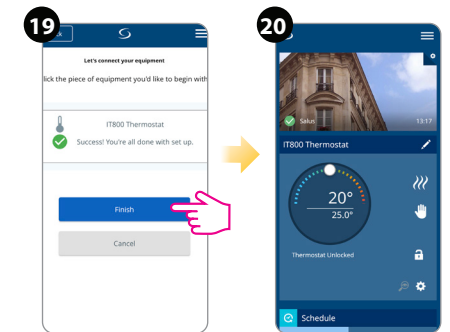
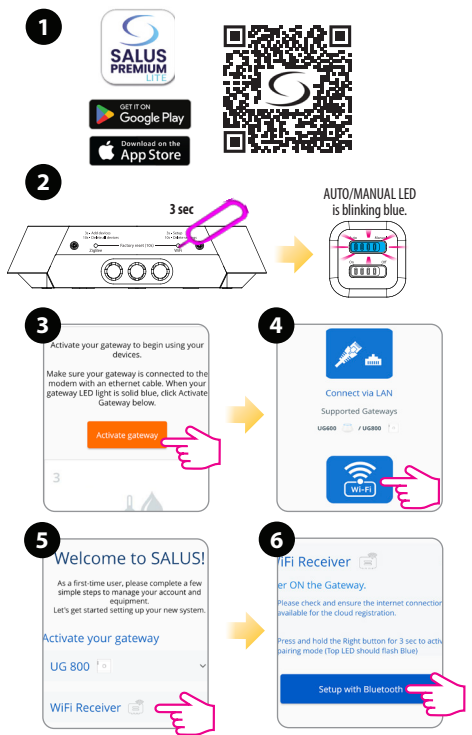


### Advanced menu - Factory Reset



### Installation in Online mode

Power on the device then follow these steps to gain control via the Salus Premium Lite app.



1 The IT800 thermostat can receive Over-the-Air (OTA) updates to stay current with the latest software and firmware. This is to fix bugs and improve overall functionality without manual intervention.

### Wall mounting

1 The IT800 thermostat comes with a square wall plate and an optional round wall mount.

