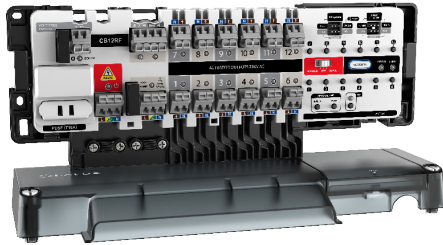


## CB12RF

RF MULTIZONE CONTROL BOX



MULTILINGUAL MANUAL



Quick Guide



**Manufacturer:**  
SALUS Controls plc,  
Units 8-10,  
Northfield Business Park,  
Forge Way, Parkgate  
Rotherham, S60 1SD  
United Kingdom

**UK:** tech@salus-tech.com  
**DE / NL:** info@salus-controls.de  
**FR:** technicalsupport@saluscontrols.fr  
**RO:** tehnic@saluscontrols.ro  
**DK:** Support@salus-controls.dk



www.saluscontrols.com

SALUS Controls is a member of the Computime Group. Maintaining a policy of continuous product development, SALUS Controls plc reserves the right to change specifications, design and materials of products listed in this brochure without prior notice.



V04  
06/2025

**Importer:**  
Salus Controls European  
Distribution sp.z o.o.,  
ul. Szamocka 8, piętro 6,  
01 748  
Warszawa, Poland

### Introduction

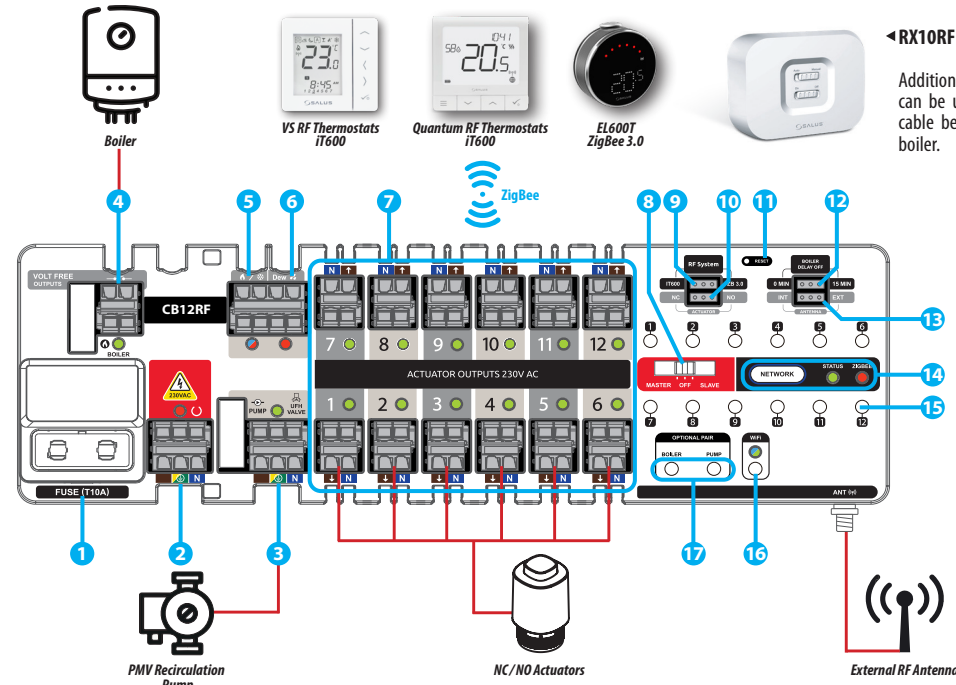
The CB12RF is an advanced RF control box designed to address the key installation and functionality challenges. Featuring iT600 and ZigBee 3.0 device compatibility, it allows seamless integration with other smart home devices and systems. Compact and streamlined, the CB12RF is ideal for manifold installations. It supports up to 2 actuators per zone, adapting flexibly to diverse heating requirements. Additional features include earth terminals for enhanced safety and multiple operating modes (Master, Slave, or Off) to ensure compatibility with both existing iT600 products and further ZigBee 3.0 systems. With built-in WiFi for cloud connectivity and firmware updates, the CB12RF combines cutting-edge technology and user-friendly features, making it a powerful and efficient solution for modern heating control.

### Product Compliance

This product complies with the essential requirements and other relevant provisions of Directives GPSR 2023/988/EU, RED 2025/138/EU and RoHS 2017/2102/EU. The full text of the EU Declaration of Conformity is available at the following internet address: [www.saluslegal.com](http://www.saluslegal.com).  
(P) 2405-2480MHz, <20dBm

### Safety Information

Use in accordance with national and EU regulations. Use the device as intended, keeping it in dry condition. Product for indoor use only. Installation must be carried out by a qualified person in accordance to national and EU regulations.



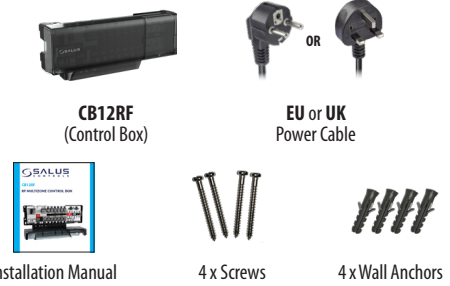
◀ **RX10RF & RX30RF Boiler Receiver (optional)**  
Additional, wireless device control module that can be used - for example - when we can't use cable between the CB12RF control box and the boiler.

- 1 Fuse
- 2 Power Supply
- 3 Pump Output
- 4 Boiler Output
- 5 Heat / Cool Changeover
- 6 Dew Point (for dew detection)
- 7 Wiring Centre Zones
- 8 MASTER - OFF - SLAVE Selection
- 9 iT600 - ZigBee 3.0 Selection
- 10 NC-NO Actuator Selection
- 11 Reset Button
- 12 0MIN - 15MIN Boiler Delay Selection
- 13 INT - EXT Antenna Selection
- 14 Network Buttons and LEDs
- 15 Zone Buttons
- 16 WiFi Button and LED
- 17 Boiler and Pump Buttons

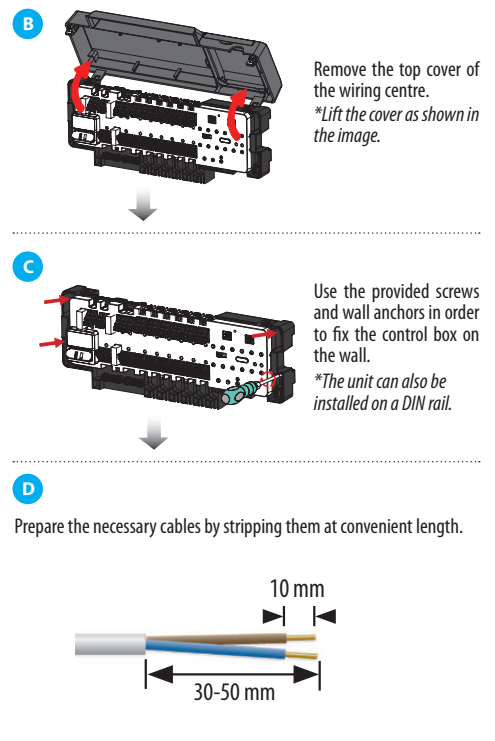
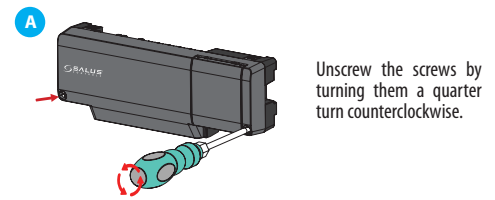
### Control Box Description & Compatibility

This product is compatible with a wide range of devices, including thermostats, actuators, receivers, boilers, pumps, dew point sensors, and additional CB12RF control boxes.

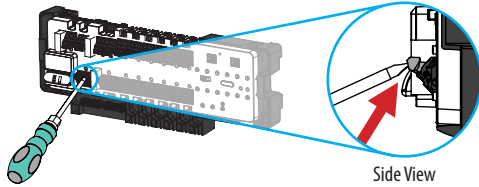
#### Box Content



### Wall Mounting

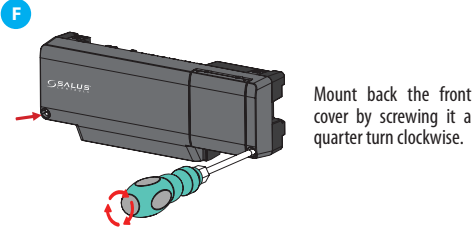


**E** Press the push-in terminal to open the connection point, insert the cable into the designated slot, and then release it to secure the connection. Repeat this process for all required components, ensuring each cable is placed according to its designated position in the Control Box.



Side View

Example below for connection of the Power cable.



Mount back the front cover by screwing it a quarter turn clockwise.

**⚠** Make sure that all wires are properly connected, then connect the power cord to the 230 V AC power supply.

## Setup and Configuration

**G** Set the jumpers **9**, **10**, **12** and **13** to the desired positions based on the required conditions.

Jumper		
<b>IT600-ZigBee 3.0</b> <b>9</b>	For thermostats: <b>VS</b> range, <b>Quantum</b> range, <b>HTR</b> range, <b>TS600</b> .	For <b>Elypso</b> thermostats.
<b>NC-NO Actuator</b> <b>10</b>	<b>NC</b> When using normally closed actuators	<b>NO</b> When using normally open actuators.
<b>Boiler Delay OFF</b> <b>12</b>	<b>0 MIN</b> Boiler turn-off delay: 0 minutes	<b>15 MIN</b> Boiler turn-off delay: 15 minutes
<b>INT-EXT Antenna</b> <b>13</b>	<b>INT</b> On board RF antenna	<b>EXT</b> External antenna

**i** If using a mix of both ZigBee 3.0 and IT600 Thermostats on a Control Box, set the jumper **9** on **IT600** position.

**H** Set the **MASTER-OFF-SLAVE** Slide switch **8** to **MASTER** or **SLAVE** based on your needs and follow the provided table.

<b>OFFLINE</b> mode	<b>3</b> (1 <sup>st</sup> unit)	<b>3</b> (units: 2 <sup>nd</sup> up to 9 <sup>th</sup> )
<b>ONLINE</b> mode <i>With SALUS Premium Lite App</i>	<b>X</b>	<b>3</b>

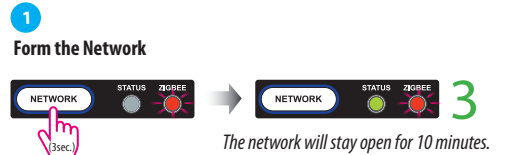
**MASTER:** The control box acts as a coordinator, creating its own network for compatible devices to connect and communicate with (Offline mode).

**SLAVE:** The control box acts as an end device, requires joining a Master network that can be a gateway or another control box.

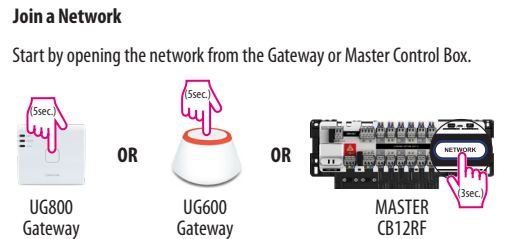
**i** When set to **SLAVE**, the control box can connect to another control box network or a compatible Gateway, operating in both Online and Offline modes.

## Configuration in Offline Mode

**⚠** **Attention:** Ensure all previous steps have been followed correctly before proceeding.



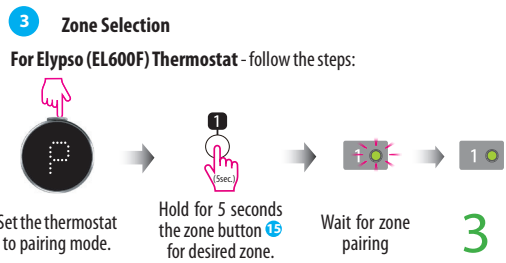
**OR**



Then hold the **NETWORK** button for 3 seconds on slave Control Box.

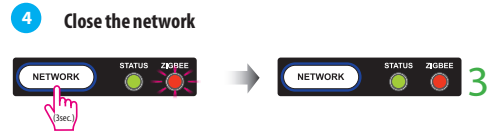
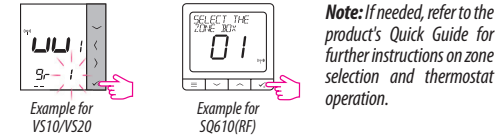
**2 Thermostat Pairing**

Follow the instructions provided for each thermostat in order to join and enter pairing mode.



**i** To select multiple zones, simply repeat the process for each desired zone button.

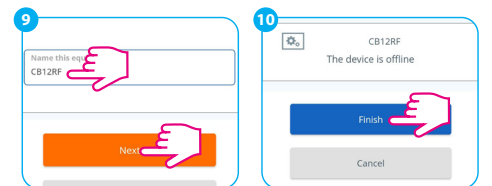
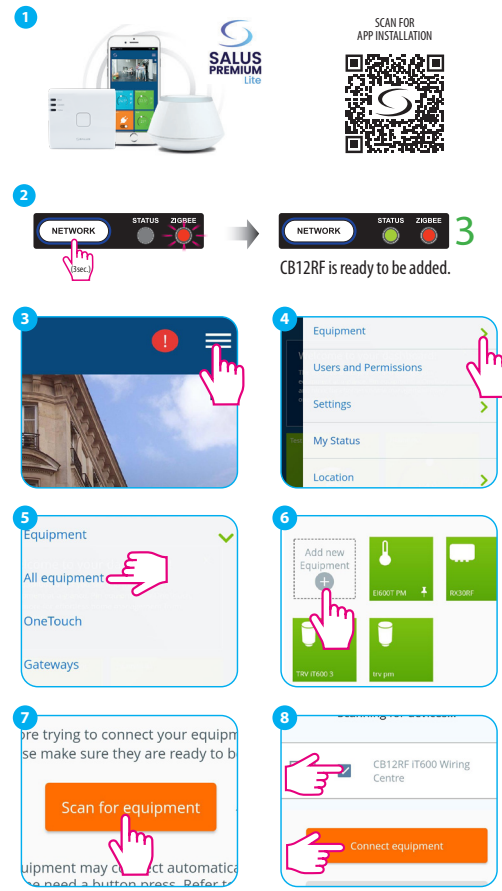
**For IT600 -** the selection can be done directly from the thermostat.



## Configuration in Online Mode

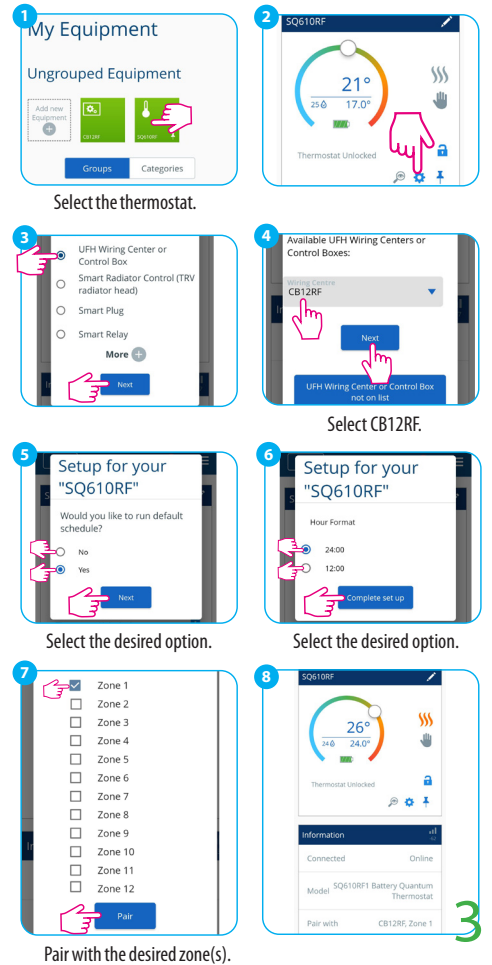
**⚠** To operate in Online mode, a gateway connected to Internet is required.

### Add Control Box to Smartphone App (Salus Premium Lite)



### Thermostat pairing with specific zone

**i** In Online mode, all compatible thermostats can be paired with the same control box.



## Factory Reset

To perform a factory reset, hold the **NETWORK** button for 10 seconds.

